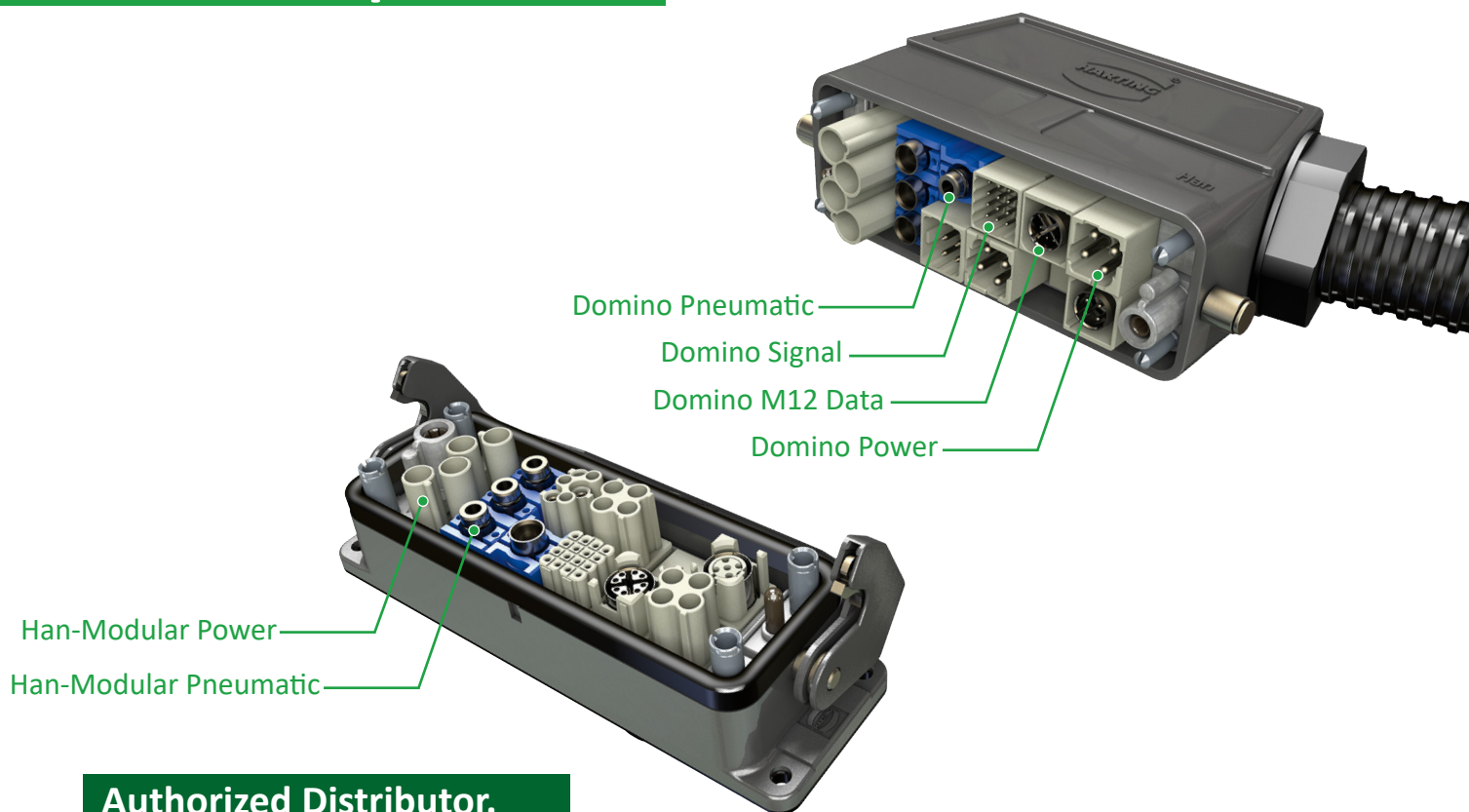


Han-Modular® Domino Modules from HARTING



New in the portfolio.



Authorized Distributor.

- Space and weight savings of up to 50%.
- Shorter assembly times.
- More connection types possible in one connector.
- Han-Modular and Domino modules in one housing.
- Power supply, pneumatic, data and signal transmission can be combined in one connector.



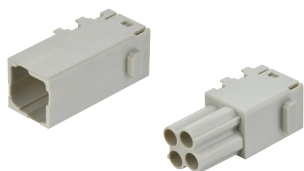
Our Portfolio - Proven Quality.

Han-Modular® Domino Modules from HARTING

The new Domino modules from HARTING enable a wide range of different connection options with a much smaller footprint. They can also be combined with the previous Han-Modular modules in the connector housings. Thus, it is no problem to exchange the Han-Modular module for power with a corresponding Domino module in order to add another Domino module for data transmission, for example. The Domino modules are simply plugged together and then placed in the connector housing.

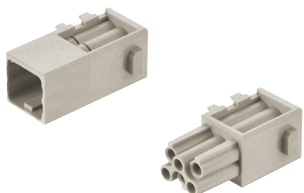


Domino-Module for Power Supply



Han-Domino EE Cube, crimp

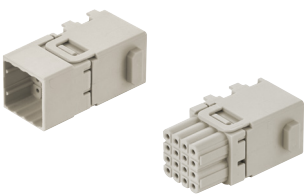
- 4 contacts
- 16 A / 400 V
- 0,14 ... 4 mm²
- Crimp terminal, Han E



Han-Domino DD Cube, crimp

- 6 contacts
- 10 A / 250 V
- 0,14 ... 2,5 mm²
- Crimp terminal, Han D

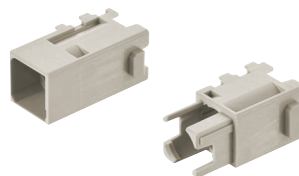
Domino-Module for Signal Transmission



Han-Domino HD Cube, crimp

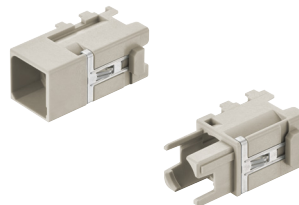
- 16 contacts
- 4 A / 32 V
- 0,09 ... 0,5 mm²
- Crimp terminal, D-Sub

Domino-Module for Data Transmission



Han-Domino M12 Cube

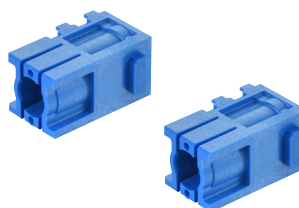
- for Han M12 insert
- D-coded (Cat. 5e)
- X-coded (Cat. 6A)
- up to 10 Gbit/s



Han-Domino M12 GND Cube

- for 1 Han M12 insert
- D-coded (Cat. 5e)
- X-coded (Cat. 6A)
- up to 10 Gbit/s
- Version with additional shielding to the articulated frame

Domino-Module for Pneumatic



Han-Domino Pneumatic Cube

- 1 contact
- ≤ 10 bar
- 3 + 4 + 6 mm

