

LAWN AND GARDEN

SOLUTIONS GUIDE

Our Solutions Enable You to Design the Lawn and Garden Products of Tomorrow.

TE Connectivity's (TE) broad range of connectivity and sensor products provide the essential solutions you need for power tools, lawn and garden equipment, pumps and motors, and more. TE is the ideal partner to help you bring your products to market fast—and take the work out of yard work.



Power Tools

APPLICATIONS

- Battery
- Charger
- Charging Contacts
- Grounding/Power Block/Distributor
- Lighting
- Motor
- Switches
- Power Cord/Charger
- Power Cord/Charging Connector
- Smart Board



Lawn and Garden Equipment

APPLICATIONS

- Battery
- Grounding/Power Block/Distributor
- Lighting
- Main Control Board
- Motor
- Power Cord/Charger Connector
- Power Cord/Charger
- Smart Board
- Switches
- Test Port
- User Interface Control Board



Pumps and Motors

APPLICATIONS

- Battery
- Grounding/Power Block/Distributor
- Lighting
- Main Control Board
- Motor
- Power Cord/Charger Connector
- Power Cord/Charger
- Smart Board
- Switches
- Test Port
- User Interface Control Board



PRODUCT LISTINGS:

POWER TOOLSpage 4
LAWN AND GARDENpage 5
PUMPS AND MOTORSpage 6
FEATURED PRODUCTSpage 7

Power Tools

Designing a more compact power tool? It starts with TE Connectivity. TE has a broad range of products that bring the power to the tools. Our reliable and consistent connectivity solutions allow power tools to be durable and withstand harsh conditions. TE's products are found in numerous applications, making our components key contributors to the power tool solution.



APPLICATIONS

- Battery
- Charger
- Charging Contacts
- Grounding/Power Block/Distributor
- Lighting
- Motor
- Switches
- Power Cord/Charger
- Power Cord/Charging Connector
- Smart Board



PRODUCTS	Centerline (mm)	Mating Style	Wire Size (AWG)	Position Size Range	Current Rating	Features	Applications																	
							Battery	Charger	Charging Contacts	Grounding/Power Block/Distributor	Lighting	Motor	Power Cord/Charger	Power Cord/Charging Connector	Switches	Smart Board								
CONNECTORS																								
Economy Power 2.5 Connectors	2.5	WTW WTB	26-22	2-20 single 8-40 double	4.5A	TPA, external robust locking latch, low insertion force and lubricated terminals. Colors available																		
High Performance Interconnect (HPI)	0.8-2.5	WTB	30-24	2-30	Up to 3A	Wide range of centerline options, multiple color variations, and latching options																		
Standard USB Connector Type A	2, 2.5	CTB	N/A	4-16	1A	Designed for outside-of-box, user friendly applications																		
MAGNET WIRE TERMINALS AND SPLICES																								
MAG-MATE Terminals & Splices	N/A	N/A	34-12	N/A	Varies	IDC for solder-free connections with no pre-stripping. Available in tin-plated brass with a variety of input/output options. Cu or Al wire																		
TERMINALS & SPLICES																								
FASTON Terminals & Housings	N/A	WTW WTB	26-10	N/A	48A	Quick connect-disconnect receptacles and tab-type terminals. Available in straight and flag-types. Four series 250, 205, 187 and 110. Single- and multi-position housings																		
POD-LOK Receptacles	N/A	WTW WTB	22-12	N/A	3-20A	Pre-insulated, low insertion force and ergonomic. Combines Positive Lock receptacles with GWT, UL 94V-0 rated housings																		
Ring and Spade Terminals & Splices	N/A	WTB	26-6	N/A	Varies	Offered in a range of sizes, materials, configurations and platings to meet specific requirements. Versatile mating options support solid or stranded single wire connections																		
Ultra-Fast Terminals	N/A	WTW WTB	26-10	N/A	48A	Pre-insulated, tin plated copper alloy terminals. UL rated at +105°C. Color-coded by wire size																		
SWITCHES																								
Tactile Switch	N/A	N/A	N/A	1-3	0.05-0.3	Sealed and unsealed. Radial tape and ultra low profile versions																		

PRODUCTS	Shrink Ratio	Operating Temperature (°C)	Standard Size Range (mm)	Colors	Flammability Rating	Features	Applications																	
							Battery	Charger	Charging Contacts	Grounding/Power Block/Distributor	Lighting	Motor	Power Cord/Charger	Power Cord/Charging Connector	Switches	Smart Board								
TUBING																								
DWFR Heat Shrink Tubing	3:1 & 4:1	-40 to 110	3:1: 3.0 to 40.0; 4:1: 4.0 to 52.0	Black	UL 224 VW-1	Highly flame-retardant dual wall tubing electrically insulates, mechanically protects, and resists moisture																		
RW-175 Heat Shrink Tubing	2:1	-55 to 175	1.2 to 50.8	Standard: Translucent; Nonstandard: Black	ASTM D2671, Proc. C; UL 224/CSA VW-1	Thin wall design. Highly resistant to flame, high temperatures and chemicals																		
SWFR Heat Shrink Tubing	2:1	-30 to 125	1.0 to 30.0	Black	UL 224/CSA VW-1	Cost effective, highly flame retardant, non-halogenated single wall tubing																		
VERSAFIT Heat Shrink Tubing	2:1	-55 to 135	1.2 to 101.6	Various colors	ASTM D2671, Proc. C; UL 224/CSA VW-1	Very flexible, highly flame-retardant single wall tubing																		

Lawn and Garden Equipment

TE Connectivity's products enable lawn and garden tools to withstand the harshest weather conditions and power through your most demanding projects. Whether it's a mower, trimmer, snow blower, or chainsaw, our reliable components perform in the toughest outdoor environments, producing the best results for all your outdoor projects.

APPLICATIONS

- Battery System
- Display Board/User Interface
- Lighting
- Blade
- Emergency Stop Button
- Motor
- Sensor
- Buzzer
- Grounding/Power Block/Distributor
- Power Cord/Charging Connector
- Smart Board
- Charger
- Power Cord/Charging Connector
- Switches
- USB Port
- Wheels

PRODUCTS	Centerline (mm)	Mating Style	Wire Size (AWG)	Position Size Range	Current Rating	Features	Applications												
							Battery	Blade System	Buzzer	Charger	Control Board	Display Board/User Interface	Emergency Stop Button	Grounding/Power Block/Distributor	Lighting	Motor	Power Cord/Charger	Power Cord/Charging Connector	Sensors
CONNECTORS																			
AMP-LATCH Connectors	N/A	WTB	26-32	6-64	1A	Mass termination capabilities, no need to strip or prepare wire, providing potential labor savings. Variety of centerline options													
AMPMODU Connectors	2.5	WTW, WTB, BTB	20-32	1-80	1-3A	Reliable and economical, includes board-to-board, wire-to-board and wire-to-wire connectors, large variety of components and application possibilities, small size and great quality													
Economy Power 2.5 Connectors	2.5	WTW	26-22	2-20 single 8-40 double	4.5A	TPA, external robust locking latch, low insertion force and lubricated terminal colors available													
Flexible Printed Circuit Connectors	0.25-1.25	FTB	N/A	2-75	0.5A	Low profile height and light-weight solution. Slant insert option													
High Performance Interconnect (HPI)	0.8-2.5	WTB	30-24	2-30	Up to 3A	Wide range of CL options, multiple color variations, and latching options													
Micro MATE-N-LOK Connectors	3	WTW	20-30	2-12 single 2-24 double	5A	Low profile height with dual beam receptacle contact design. PCB mount pin header assemblies													
Micro-MaTch Connectors	1.27	WTB	28	4-24	N/A	Unique contact-spring system helps prevent fretting corrosion by absorbing movements between male and female contacts													
Mini Universal MATE-N-LOK Connectors	4.14	WTW	30-16	1-24	9.5A	Splash-proof design for applications that require sealing													
MTA-100 Connectors	2.54	WTB	28-22	2-28	5A	Molded ribs on the housing help to prevent reverse mating errors. IDC technology													
Power Double Lock Connectors	3.96	WTW	26-18	1-12	14A	Audible click when contact is fully inserted into the housing. Board-mounted headers are compatible with resin or conformal coatings— no drain holes													
Standard USB Connector Type A	2, 2.5	CTB	N/A	4-16	1A	Designed for outside-of-box, user friendly applications													
VAL-U-LOK Connectors	4.2	WTW	26-16	2-24	9A	Mate first/break last feature on 3 position single row receptacle housings													
TERMINALS & SPLICES																			
AMP Superseal	N/A	WTW	22-14	N/A	N/A	Stamped & formed contact system, rated up to 15 amps. Wire sizes from 1.25 to 0.50mm ²													
FASTON Terminals & Housings	N/A	WTW	26-10	N/A	48A	Quick connect-disconnect receptacles and tab-type terminals. Available in both straight and flag-types. Four series 250, 205, 187 and 110. Single- and multi-position housings													
POD-LOK Receptacles	N/A	WTW	22-12	N/A	3-20A	Pre-insulated, low insertion force and ergonomic. Combines Positive Lock receptacles with GWT, UL 94V-0 rated housings													
Positive Lock Receptacles	N/A	WTW	24-10	N/A	Varies	Wire-to-tab termination in brass and tin-plated brass. Ease of assembly and secure retention to mating tabs													
Ring and Spade Terminals & Splices	N/A	WTB	26-6	N/A	Varies	Offered in a range of sizes, materials, configurations and platings to meet specific requirements. Versatile mating options support solid or stranded single wire connections.													
Ultra-Fast Terminals	N/A	WTW	26-10	N/A	48A	Pre-insulated tin plated copper alloy terminals. UL rated at +105°C. Color coded by wire size													
SWITCHES																			
Tactile Switch	N/A	N/A	N/A	1	0.05A	Sealed and unsealed. Radial tape and ultra low profile versions													

PRODUCTS	Shrink Ratio	Operating Temperature (°C)	Standard Size Range (mm)	Colors	Flammability Rating	Features	Applications												
							Battery	Blade System	Buzzer	Charging	Control Board	Display Board/User Interface	Emergency Stop Button	Grounding/Power Block/Distributor	Lighting	Motor	Power Cord/Charger	Power Cord/Charging Connector	Sensors
TUBING																			
SWFR Heat Shrink Tubing	2:1	-30 to 125	1.0 to 30.0	Black	UL 224/CSA VW-1	Cost effective, highly flame retardant, non-halogenated single wall tubing													

Pumps and Motors

Whether your product is used for a pool pump, water supply, air conditioning, refrigeration or other use, TE Connectivity's robust and reliable products ensure that your pump and motor will work properly and efficiently. Pumps are key contributors to many products, making the quality of the pump a critical factor. Together we can ensure your pumps and motors are producing the best quality and always doing their jobs.

APPLICATIONS

- Battery
- Grounding/Power Block/Distributor
- Lighting
- Main Control Board
- Motor
- Power Cord/Charger Connector
- Power Cord/Charger
- Smart Board
- Switches
- Test Port
- User Interface Control Board

PRODUCTS	Centerline (mm)	Mating Style	Wire Size (AWG)	Position Size Range	Current Rating	Features	Applications																
							Battery	Grounding/Power Block/Distributor	Lighting	Main Control Board	Motor	Power Cord/Charger	Power Cord/Charger Connector	Smart Board	Switches	Test Port	User Interface Control Board						
CONNECTORS																							
Economy Power 2.5 Connectors	2.5	WTW WTB	26-22	2-20 single 8-40 double	4.5A	TPA, external robust locking latch, low insertion force and lubricated terminals. Colors available	●						●				●	●					
Flexible Printed Circuit Connector	0.25-1.25	FTB	N/A	2-75	0.5A	Low profile height and light-weight solution. Slant insert option												●					
MTA-100 Connectors	2.54	WTW WTB	20-26	2-28	5A	Molded ribs on the housing help to prevent reverse mating errors. IDC technology												●					
Standard USB Connector Type A	2.25	CTB	N/A	4-16	1A	Designed for outside-of-box, user friendly applications	●																
High Performance Interconnect (HPI)	0.8-2.5	WTB	30-24	2-30	Up to 3A	Wide range of centerline options, multiple color variations, and latching options											●						
MAGNET WIRE TERMINALS AND SPLICES																							
AMPLIVAR Terminals & Splices	N/A	WTW WTB	24-6.5	N/A	Varies	Cu or Al magnet wire, or a combination of both, can be terminated. Compression crimp technology in the 400 to 22,000 CMA range. -65°C to 150°C with 25 thermal shock cycles							●										
MAG-MATE Terminals & Splices	N/A	N/A	34-12	N/A	Varies	IDC for solder-free connections with no pre-stripping. Available in tin-plated brass with a variety of input/output options. Cu or Al wire							●										
SIAMEZE Terminals & Splices	N/A	N/A	34-18	N/A	Varies	IDC provides perpendicular and parallel lead wire strain relief retention forces in excess of 20 lbs (90N). No lead wire stripping required							●					●					
POWER RELAYS																							
OJ Relay	N/A	N/A	N/A	1A (NO)	3-10A	1 form A (NO) contacts various models support a range of loads, with contact ratings from 3 to 10 amps, plus TV-5. Both sensitive (200mW) and standard (450mW) coil options accommodate various drive circuits											●						
RZ Power PCB Relay	N/A	N/A	N/A	1A (NO) 1C (C/O)	16A	Global standard platform for 16 amp applications. Designed to overcome micro welding in the contact interface to improve life time. Standard versions for 85°C ambient temperature and high temperature versions for 105°C											●						
TERMINALS & SPLICES																							
FASTON Terminals & Housings	N/A	WTW WTB	26-10	N/A	48A	Quick connect-disconnect receptacles and tab-type terminals. Available in both straight and flag-types. Four series 250, 205, 187 and 110. Single- and multi-position housings		●	●					●		●							
POD-LOK Receptacles	N/A	WTW WTB	22-12	N/A	3-20A	Pre-insulated, low insertion force and ergonomic. Combines Positive Lock receptacles with GWT, UL 94V-0 rated housings			●				●										
Ring and Spade Terminals & Splices	N/A	WTB	26-6	N/A	Varies	Offered in a range of sizes, materials, configurations and platings to meet specific requirements. Versatile mating options support solid or stranded single wire connections	●	●		●	●												
Ultra-Fast Terminals	N/A	WTW WTB	26-10	N/A	48A	Pre-insulated tin plated copper alloy terminals. UL rated at +105°C. Color coded by wire size		●					●										
SWITCHES																							
Tactile Switch	N/A	N/A	N/A	1	0.05A	Sealed and unsealed. Radial tape and ultra low profile versions	●										●		●				

PRODUCTS	Shrink Ratio	Operating Temperature (°C)	Standard Size Range (mm)	Colors	Flammability Rating	Features	Applications																
							Battery	Grounding/Power Block/Distributor	Lighting	Main Control Board	Motor	Power Cord/Charger	Power Cord/Charger Connector	Smart Board	Switches	Test Port	User Interface Control Board						
TUBING																							
SWFR Heat Shrink Tubing	2:1	-30 to 125	1.0 to 30.0	Black	UL 224/ CSA VW-1	Cost effective, highly flame retardant, non-halogenated single wall tubing				●			●	●				●					
VERSAFIT Heat Shrink Tubing	2:1	-55 to 135	1.2 to 101.6	Various colors	ASTM D2671, Proc. C; UL 224/CSA VW-1	Very flexible, highly flame-retardant single wall tubing			●				●	●									

Featured Products



AMPLIVAR Terminals & Splices

- Up to three magnet wires plus a lead wire in the same crimp
- Cu and Al magnet wire can be combined
- Penetrates the magnet wire insulation while simultaneously terminating wire



Economy Power 2.5mm Connectors

- Achieve easy mating and unmating with positive audible latch
- Prevent post misalignment with polarization tabs



High Performance Interconnect (HPI) Connectors

- Achieve low signal/power connections in a 1.0mm to 2.5mm centerline footprint
- Prevent contact stubbing with polarized housings



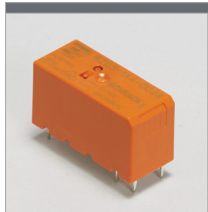
Micro MATE-N-LOK Connectors

- Low profile design
- Dual beam receptacle contact design
- PCB mount pin header assemblies



Power Double Lock Connectors

- 1-12 position WTW or WTB
- Audible click when contact is fully inserted into the housing
- Board-mounted headers are compatible with resin or conformal coatings



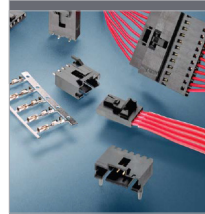
RZ Power PCB Relays

- Lower profile relay on a global standard platform for 16A applications
- Offers bottom sealed type and reinforced flux proof



Ultra-Fast Terminals & Splices

- Designed for full mating with a variety of tab styles including those with shoulders
- Terminate 26-10 AWG solid, fused and stranded wire (flags terminate stranded wire only)



AMPMODU Connectors

- Reliable and economical, includes board-to-board, wire-to-board and wire-to-wire connectors, large variety of components and application possibilities, small size and great quality



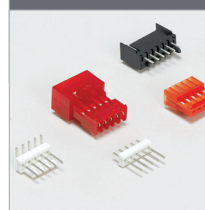
FASTON Terminals & Splices

- Insulated and uninsulated, straight and flag configurations
- Stress relieved and non-stress relieved receptacles and various plating options



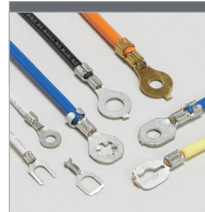
MAG-MATE Terminals & Splices

- High speed, fully automated integrated systems provide uniform terminations reliably at the lowest possible applied cost



MTA-100 Connectors

- 2-28 positions, shrouded headers 2-14
- Terminates 28-22 AWG discrete wire or notched ribbon cable
- 250V, 5A rating



Ring and Spade Terminals & Splices

- Versatile mating options support solid or stranded single wire connections
- Offer a range of sizes, materials, configurations and platings to meet specific requirements



Tactile Switch

- Achieve any design with choice of actuator lengths and styles
- Support mass fabrication with several mounting options



VAL-U-LOK Connectors

- Ratings up to 9A per line in a 4.2mm pitch WTW or WTB connectors
- Mate first/break last option on 3 position single row receptacle housings
- As many as 24 positions in dual row configuration with optional TPA

TE TECHNICAL SUPPORT CENTER

USA:	+1 (800) 522-6752
Canada:	+1 (905) 475-6222
Mexico:	+52 (0) 55-1106-0800
Latin/S. America:	+54 (0) 11-4733-2200
Germany:	+49 (0) 6251-133-1999
UK:	+44 (0) 800-267666
France:	+33 (0) 1-3420-8686
Netherlands:	+31 (0) 73-6246-999
China:	+86 (0) 400-820-6015

te.com

AMP-IN, AMP-LATCH, AMPLIVAR, AMPMODU, FASTON, MAG-MATE, MATE-N-LOK, Micro MaTch, MTA, POD-LOK, Positive Lock, SIAMEZE, VAL-U-LOK, VERSAFIT, TE, TE Connectivity and TE connectivity (logo) are trademarks. All other logos, products and/or company names referred to herein might be trademarks of their respective owners.

The information given herein, including drawings, illustrations and schematics which are intended for illustration purposes only, is believed to be reliable. However, TE Connectivity makes no warranties as to its accuracy or completeness and disclaims any liability in connection with its use. TE Connectivity's obligations shall only be as set forth in TE Connectivity's Standard Terms and Conditions of Sale for this product and in no case will TE Connectivity be liable for any incidental, indirect or consequential damages arising out of the sale, resale, use or misuse of the product. Users of TE Connectivity products should make their own evaluation to determine the suitability of each such product for the specific application.

© 2018 TE Connectivity Ltd. family of companies All Rights Reserved.

1-1773959-1 08/18 Original