



RELAYS

SELECTION GUIDE

TE Connectivity (TE) is your components provider for relays that help increase reliability and enhance productivity in your applications. We offer the broadest range of relays and contactors in the world. This selection guide will help you choose the best relay for your application with easy access to additional online information at te.com. TE's quick-to-install and industry-proven relays will help you develop solutions for your most demanding connectivity challenges.



1

AEROSPACE, DEFENSE & MARINE

TE's high-performance relays are designed specifically to operate in extremely rigorous environments in military and aerospace applications. Our relay products include COTS (commercial off-the-shelf), Mil-Spec, plus highly specialized, and custom-designed products.



2

APPLIANCES

General purpose power and signal relays are among the many components TE provides appliance manufacturers. From a broad range of small countertop appliances to major home appliances and other in-home equipment, TE relays switch heating elements, motors, compressors, lamps and other loads.



3

AUTOMOTIVE

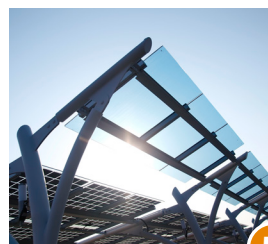
TE not only offers standard relays, but also develops individually tailored innovative products and system solutions. From passenger comfort and infotainment to higher DC voltages and power levels to harsh environments, our relays provide critical switching functions in multiple vehicle applications.



4

COMMUNICATIONS

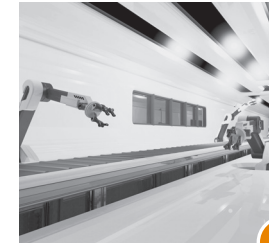
From high frequency relays for antenna switching to power control relays for end-user equipment, TE's relay products offer the vast communications market an array of components.



5

ENERGY

Relays meeting the specific requirements for use in power inverters are among the switching components offered by TE's relay products for alternative energy applications.



6

INDUSTRIAL

Whether the application is a basic pump control circuit, a complex interface with a programmable logic controller or a safety circuit, industrial machinery designers specify components from TE's relay products.



7

INTELLIGENT BUILDINGS

TE's relay products provide a broad range of products for use in building equipment such as elevators, HVAC systems, alarms and more.



8

MEDICAL

TE provides high-quality relay solutions that can transform patient care and are designed and manufactured to work in harsh medical environments.




9

RAIL

Modern railways are becoming faster, safer, and more efficient. TE's relay products provide the reliable, high powered products needed to keep railways moving forward.

FEATURED PRODUCTS



FC-325 SERIES RELAY

1

eCard Brochure

- Qualified to MS27418 specifications, this 25A hermetically sealed relay is excellent for harsh inductive, motor, and lamp load applications.
- The double-make, double-break design provides more stable performance in comparison to balanced armature designs—also suitable for variable frequencies.

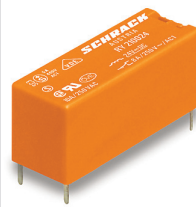


EVC 250 MAIN CONTACTOR

3

White Paper

- Save space with compact design dimensions of only 93 x 55.3 x 49.8mm (3.7 x 2.2 x 2.0")
- Promote safety with a short circuit safety feature that carries currents up to 6,000A
- Achieve highest reliability with a design that works without pressurized contact chamber

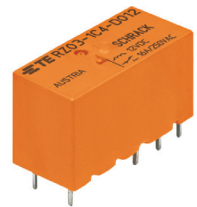


RYII POWER PCB RELAY

2 4 5 6 7 8

Brochure

- Low component height 12.3mm
- Reinforced insulation (protection class II)
- Especially suitable for resistive and inductive loads on form A (NO) and form B (NC) contacts




RZ POWER PCB RELAY

2 4 5 6 7 8

Flyer Brochure

- Global standard platform for 16 Amp applications
- Designed to overcome micro welding in the contact interface to improve life time
- Standard versions for 85°C ambient temperature and high temperature versions for 105°C




EV-202 HIGH-VOLTAGE CONTACTOR

1 3 5 6 7

Brochure

- DPST 400V/350A per pole – takes the place of two contactors
- Bi-Directional switching, not polarity sensitive
- Economized coil with low hold power




MINI K-HV PRE-CHARGE RELAY

3

Datasheet

- Offer the smallest precharge relay available in its class (PCB version)
- Serve a vast majority of precharge applications in electrical vehicles
- Cover fault break operations of up to 20A at 450VDC



RTX POWER PCB RELAY

5 6 7

Brochure

- Provide high in-rush capability due to tungsten pre-make contact and silver tin oxide carry/break contact
- Helps provide additional safety protection with reinforced insulation
- Meet industry standards with small product dimensions of 29.1 x 12.7 x 16mm



T9S SOLAR RELAY

5 6 7

Flyer

- Provide a solution for disconnect switch applications
- Enable high current switching (8kW solar inverters)
- Provide a solution for cad-free application requirements




FCA-150, FCAC-150 SERIES RELAY

1

Brochure

- Hermetically sealed 50 Amp relay designed for environmentally demanding aerospace and military applications
- Offers size and weight savings with 50 Amp switching capability in a one cubic inch package – available with 1 Form C (SPDT) 2A auxiliary contact




PCN 3A SLIM PCB RELAY

2 4 5 6 7 8

Brochure

- Only 5mm wide
- Allows high function packing density
- Z type with reinforced insulation

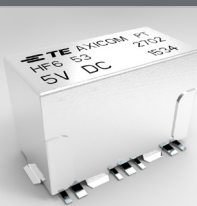


EW60 PCB RELAY

5 6 7

eCard Flyer

- Enable energy savings and provide low self-heating through a bi-stable magnetic system
- Features the ability to disconnect the entire floor of a building with up to 60Amps
- Provide strong electronic ballast switching (50k operations) through NEMA 410-2011, 16A or 20A branch circuit rating




HF6 RELAY

4 5 6 7 8

Datasheet

- Frequency range up to 6 GHz
- High isolation and low insertion loss
- Scalable PCB footprint




K1K HIGH-VOLTAGE CONTACTOR

1 3 5 6 7

Brochure

- 1,000V/1,000A carry and break contactor for Lithium Ion battery applications (highest ratings in the industry)
- Main disconnect contactor for large battery bank applications

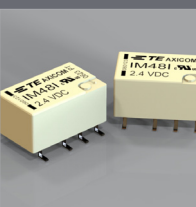


MINIATURE RELAY PT

5 6 7

Brochure

- Miniature space efficient relay for socket or PCB mount
- 2, 3 and 4 pole versions with load current 12, 10 and 6A
- Transparent cover with manual operator options for testing of wiring in cabinet




IM RELAY

2 4 5 6 7 8

Brochure

- Offer high dielectric and surge capability up to 2500Vrms between open contacts and 2500Vrms between coil and contacts
- Slim line 10x6mm, low profile 5.65mm and minimum board-space 60mm²

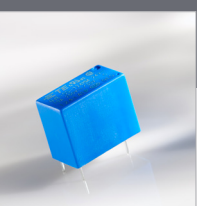


PCH MINIATURE PCB RELAY

2 6 7

Brochure

- 1 form A (NO) or 1 form C (CO) contacts support various loads, with contact ratings from 5 to 10 amps
- Space-saving design is smaller in size than "sugar cube" 3-10A relays
- Both sensitive (200mW) and standard (400mW) coil options accommodate various drive circuits




OJ/OJE/T77 RELAY

2 5 6 7

Brochure

- 1 form A (NO) contacts in various models support a range of loads, with contact ratings from 3 to 10 amps, plus TV-5
- Both sensitive (200mW) and standard (450mW) coil options accommodate various drive circuits




RT1 POWER PCB RELAY

2 4 5 6 7 8

Brochure

- High quality/performance
- Suitable for a broad range of applications
- Inrush capability




P2 SIGNAL RELAY

2 4 5 6 7 8

Brochure

- 2 form C (CO) third generation relay rated 2A, can switch 5A
- Enable design flexibility with latching (bistable) or non-latching (monostable) options
- Offer a high sensitivity solution for low power consumption (140mW/ 70mW)



PCJ MINIATURE PCB RELAY

5 6 7 8

Brochure

- 1 form A (NO) contacts are rated 5 amps
- Slim (7mm wide) design saves board space and is offered in flux proof and wash tight versions
- Sensitive coil requires only 200mW of coil power



KHR500 HIGH-VOLTAGE CONTACTOR

1 3 5 6 7

Brochure

- Enable design flexibility with voltages from 28 to 1000 VDC and continuous 600A current
- Allow for power switching in either direction with main power terminals that are not polarity sensitive



KCS01 HIGH-VOLTAGE CONTACTOR

1 3 5 6 7

Brochure

- Saves space by eliminating the need for external sensor
- Flexible configuration for application needs
- Integrated dual-coil electronic economizer with coil suppression

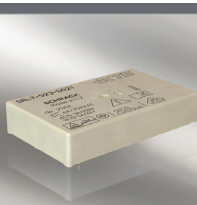


T9G SERIES RELAY

2 4 5 6 7 8

Datasheet

- Enable a solution that utilizes 30% less PCB space than current T9A style with the same footprint
- Provide safe separation between coil and contact system by using increased creepage and clearance distances through reinforced insulation



SRL7 7 POLE FORCE GUIDED RELAY

5 6 7 9

Brochure

- Enable a space saving solution through a 10.8mm high relay leave enough space in standard safety modules and enable possibility of 17.5mm slim modules
- Enable more circuits and combinations of high and low voltage circuits with a 7 Pole – 2NC and 5NO reinforced relay on all NO contacts

PRODUCT CATEGORY	Brand	INDUSTRIES									Contact Current Rating (A)	Contact Voltage Rating	Contact Arrangement	Contact Number of Poles	Contact Switching Power (W/VA)	Coil Power Rating (DC coil / bistable 1 coil/2 coils) (DC) (mW)	Coil Voltage Rating	Coil Magnetic System	Mounting Type	Terminal Type	Isolation (HF Parameter)	Insertion Loss (HF Parameter)	Insulation Initial Resistance (MΩ)	Contact Material	Key Agency Approvals
		1 AD&M	2 Appliances	3 Automotive	4 Communications	5 Energy	6 Industrial	7 Intelligent Building	8 Medical	9 Rail															
AUTOMOTIVE, TRUCK, BUS AND OFF-ROAD RELAYS																									
HIGH CURRENT AUTOMOTIVE RELAYS																									
High Current Relay 75	TE Connectivity			•							75A	12/24VDC	1 form A, 1 NO (bifurcated); 1 form A, 1 NO	1	Varies	3.1 to 4.4W	12/24VDC	DC	Screw mount	Connector and screw	N/A	N/A	N/A	AgSnO2	IP54
High Current Relay 150	TE Connectivity			•							130A	12/24VDC	1 form A, 1 NO; 1 form B, 1 NC; 1 form C, 1 CO; 1 form X, 1 NO DM	1	Varies	3.3W	12/24VDC	DC	Screw mount	Screw	N/A	N/A	N/A	AgSnO2	RoHS/ELV compliant, IP54, IP67
High Current Relay 200	TE Connectivity			•							175A	12VDC	1 form B, 1 NC	1	Varies	3.3W	12 VDC	DC	Screw mount	Connector and screw	N/A	N/A	N/A	AgSnO2	RoHS/ELV compliant, IP64
Battery Disconnect Switch BDS-A	TE Connectivity			•							260A	12/24VDC	1 form X, 1 NO DM (Bridge)	1	Varies	7W	12/24VDC	Bistable	Screw mount	Connector and screw	N/A	N/A	N/A	AgSnO2	N/A
HIGH VOLTAGE AUTOMOTIVE CONTACTORS AND RELAYS																									
Mini K HV Precharge Relay	TE Connectivity			•							20A	400VDC	1 form X (NO DM)	1	450VDC	9kW	12VDC	DC	PCB and plug-in/QC	THT and plug-in/QC	N/A	N/A	>200 MΩ	Ag based	RoHS/ELV compliant, UL94-HB
EVC 135 Main Contactor	EVC			•							135A	450VDC	1 form X (SPST NO DM)	1	Varies	5.5W (lower ohm coils need PWM)	12/24VDC	DC	Screw mount	Screw (load) and lead (coil)	N/A	N/A	>1 GΩ	Ag based	RoHS/ELV compliant
EVC 175 Main Contactor	EVC			•							175A	450VDC	1 form X (SPST NO DM)	1	Varies	4.4W (economized coil)	12VDC	DC	Screw mount	Connector (coil) and screw (load)	N/A	N/A	>200 MΩ	Ag based	RoHS/ELV compliant
EVC 250 Main Contactor	EVC			•							250A	450/800VDC	1 form X (SPST NO DM)	1	Varies	4W (economized coil)	12VDC	DC	Screw mount	Connector (coil) and screw (load)	N/A	N/A	>200 MΩ	Ag based	RoHS/ELV compliant
EVC 500 Main Contactor	EVC			•							500A	450VDC	1 form X (SPST NO DM)	1	Varies	3.2W (economized coil)	12VDC	DC	Screw mount	Stud (load) and lead (coil)	N/A	N/A	>1 GΩ	Ag based	RoHS/ELV compliant
PCB AUTOMOTIVE RELAYS																									
Micro Relay K	TE Connectivity			•							30A	12VDC	1 form A, 1 NO; 1 form C, 1 CO	A: 1; C: 1	N/A	0.55 to 1.1W	12VDC	DC	PC board	THT, THR	N/A	N/A	N/A	AgSnO2	RoHS/ELV compliant
Double Micro Relay K	TE Connectivity			•							30A	12VDC	2 form C, 2 CO	C: 2	N/A	0.55	12VDC	DC	PC board	THT, THR	N/A	N/A	N/A	AgSnO2	RoHS/ELV compliant
Power Relay K	TE Connectivity			•							45A	12VDC	1 form C, 1 CO	1	N/A	1.6W	12VDC	DC	PC board	THT	N/A	N/A	N/A	AgNi0.15, AgSnO2	N/A
Power Relay PK2 HE	TE Connectivity			•							50A	12VDC	1 form A, 1 NO	1	N/A	0.8	12VDC	DC	PC board	THT, THR	N/A	N/A	N/A	AgSnO2	RoHS/ELV compliant
Power Relay PK2 HE Latching	TE Connectivity			•							60A	12VDC	1 form A, 1 NO	1	N/A	bistable 2 coils	12VDC	DC	PC board	THT, THR	N/A	N/A	N/A	AgSnO2	RoHS/ELV compliant
PLUG-IN AUTOMOTIVE RELAYS																									
Sockets for Maxi ISO Relay	TE Connectivity			•							N/A	N/A	N/A	N/A	N/A	N/A	N/A	N/A	Plug-in	N/A	N/A	N/A	N/A	N/A	N/A
Sockets for Micro ISO Relay	TE Connectivity			•							N/A	N/A	N/A	N/A	N/A	N/A	N/A	N/A	Plug-in	N/A	N/A	N/A	N/A	N/A	N/A
Sockets for Mini (Shrouded) Relay	TE Connectivity			•							N/A	N/A	N/A	N/A	N/A	N/A	N/A	N/A	Plug-in	N/A	N/A	N/A	N/A	N/A	N/A
Micro Relay Low Noise	TE Connectivity			•							20A	12VDC	1 form A, 1 NO; 1 form C, 1 CO	1	N/A	0.6 to 0.9W	12VDC	DC	Plug-in	Plug-in, QC	N/A	N/A	N/A	Ag based	RoHS/ELV compliant
Micro Relay A/VFMA	TE Connectivity			•							30A	12/24VDC	1 form A, 1 NO; 1 form C, 1 CO	1	N/A	1 to 1.6W	12/24VDC	DC	Plug-in	Plug-in, QC	N/A	N/A	N/A	Ag based	RoHS/ELV compliant
Power Relay B	TE Connectivity			•							35A	12/24VDC	1 form A, 1 NO; 1 form C, 1 CO	1	N/A	1.7 to 2.3W	12/24VDC	DC	Plug-in	Plug-in, QC	N/A	N/A	N/A	Ag based	RoHS/ELV compliant, UL94-HB
Power Relay F4	TE Connectivity			•							40A	12/24VDC	1 form A, 1 NO/1 NO (2x87); 1 form U, 2 NO; 1 form C, 1 CO	1	N/A	1.6 to 2.1W	12/24VDC	DC	Plug-in	Plug-in, QC/THT	N/A	N/A	N/A	Ag based	RoHS/ELV compliant, UL94-HB
Shrouded Power Relay F4 A	TE Connectivity			•							40A	12VDC	1 form A, 1 NO; 1 form C, 1 CO	1	N/A	1.3W	12VDC	DC	Plug-in	Plug-in, QC/THT	N/A	N/A	N/A	Ag based	RoHS/ELV compliant, UL94-HB
Power Relay F7	TE Connectivity			•							70A	12/24VDC	1 form A, 1 NO; 1 form C, 1 CO	1	N/A	1.8 to 2.2W	12/24VDC	DC	Plug-in	Plug-in, QC/THT	N/A	N/A	N/A	Ag based	RoHS/ELV compliant, UL94-HB

PRODUCT CATEGORY	Brand	INDUSTRIES									Contact Current Rating (A)	Contact Voltage Rating	Contact Arrangement	Contact Number of Poles	Contact Switching Power (W/VA)	Coil Power Rating (DC coil / bistable 1 coil/2 coils) (DC) (mW)	Coil Voltage Rating	Coil Magnetic System	Mounting Type	Terminal Type	Isolation (HF Parameter)	Insertion Loss (HF Parameter)	Insulation Initial Resistance (MΩ)	Contact Material	Key Agency Approvals
		1 AD&M	2 Appliances	3 Automotive	4 Communications	5 Energy	6 Industrial	7 Intelligent Building	8 Medical	9 Rail															
HIGH VOLTAGE DC CONTACTORS																									
KILOVAC																									
EV100 Series Contactor	Kilovac	•	•	•	•	•	•	•	•	•	100A	600VDC	1 form X (SPST-NO)	1	Contact factory	Economized coil	9 to 32VDC	DC	Panel	Female thread	N/A	N/A	100 MΩ	Proprietary	UL, CE
LEV100 Series Contactor	Kilovac	•	•	•	•	•	•	•	•	•	100A	900VDC	1 form X (SPST-NO)	1	Contact factory	N/A	12, 24, 48	DC	Panel	Female thread	N/A	N/A	100 MΩ	Proprietary	UL, CE
EV202 Contactor	Kilovac	•	•	•	•	•	•	•	•	•	350A	400VDC	2 form X (DPST-NO)	2	Contact factory	Economized coil	12, 24VDC	DC	Panel	Female thread	N/A	N/A	50 MΩ	Proprietary	UL, CE
EV200 Series Contactor	Kilovac	•	•	•	•	•	•	•	•	•	500A	900VDC	1 form X (SPST-NO)	1	Contact factory	Economized coil	9 to 95VDC	DC	Panel	Stud	N/A	N/A	100 MΩ	Proprietary	UL, CE
LEV200 Series Contactor	Kilovac	•	•	•	•	•	•	•	•	•	500A	900VDC	1 form X (SPST-NO)	1	Contact factory	N/A	12, 24, 28, 48, 72, 96, 110DC; 115, 240VAC	DC	Panel	Stud	N/A	N/A	100 MΩ	Proprietary	UL, CE
KHR500 Contactor	Kilovac	•	•	•	•	•	•	•	•	•	600A	1000VDC	1 form X (SPST-NO) W/AUX	1	Contact factory	Economized coil	24 to 28VDC	DC	Panel	Female thread	N/A	N/A	100 MΩ	Proprietary	UL, CE
KIK Contactor	Kilovac	•	•	•	•	•	•	•	•	•	1000A	1000VDC	1 form X (SPST-NO) W/AUX	1	Contact factory	Economized coil	24VDC	DC	Panel	Busbar	N/A	N/A	100 MΩ	Proprietary	UL, CE
HIGH VOLTAGE RELAYS																									
KILOVAC																									
KM Relay	Kilovac	•	•	•	•	•	•	•	•	•	10A	7.5kV	2C, DPDT	2	Contact factory	Contact factory	12 to 26VDC	DC	Threaded	Coil leads	N/A	N/A	10 GΩ	Proprietary	N/A
HC Series Relay	Kilovac	•	•	•	•	•	•	•	•	•	25A	8kV	C SPDT	1	Contact factory	Contact factory	26.5 to 115VDC	DC	Non-flanged	Turret	N/A	N/A	0.01 to 0.5 Ω	Proprietary	N/A
KC-14 and KC-18 Relays	Kilovac	•	•	•	•	•	•	•	•	•	30A	15kV	1 form A, SPST-NO, 1 NO, 1 form B, SPST-NC, 1 N/C, 1 form C, SPDT, 1 C/O	1	Contact factory	Contact factory	12, 26.5, 115VDC	DC	Threaded	Turret	N/A	N/A	N/A	Proprietary	N/A
K81A, K81B, K81C Relays	Kilovac	•	•	•	•	•	•	•	•	•	30A	10kV	SPST-NO, SPST-NC, SPDT	1	Contact factory	Contact factory	12, 26, 115VDC	DC	PCB, Panel	THT, flying leads, threaded studs	N/A	N/A	N/A	Proprietary	N/A
K40P Relay	Kilovac	•	•	•	•	•	•	•	•	•	35A	5kV	SPST-latching	1	Contact factory	Contact factory	26.5VDC	DC	None, flanged	Solder terminals	N/A	N/A	N/A	Proprietary	N/A
KC (KC-2, KC-8, KC-11 and KC-12) Relays	Kilovac	•	•	•	•	•	•	•	•	•	50A	15kV	C, SPDT	1	Contact factory	Contact factory	12, 26.5, 115VDC	DC	Threaded	Turret	N/A	N/A	N/A	Proprietary	N/A
K44P Relay	Kilovac	•	•	•	•	•	•	•	•	•	50A	8kV	SPST-latching, 1 latching	1	Contact factory	Contact factory	26.5VDC	DC	Non-flanged	Bus wires	N/A	N/A	N/A	Proprietary	N/A
HVDC CURRENT SENSING CONTACTORS																									
KILOVAC																									
KCS01 Contactor	Kilovac	•	•	•	•	•	•	•	•	•	100A	600VDC	1 form X (SPST-NO) W/AUX	1	Contact factory	Economized coil	12, 24/28VDC	DC	Panel	Female thread	N/A	N/A	100 MΩ	Proprietary	N/A
KCS03 Contactor	Kilovac	•	•	•	•	•	•	•	•	•	500A	600VDC	1 form X (SPST-NO) W/AUX	1	Contact factory	Economized coil	12, 24/28VDC	DC	Panel	Female thread	N/A	N/A	100 MΩ	Proprietary	N/A
MIL-AERO RELAYS																									
1/5 SIZE RELAYS																									
3SBC 1/5 Size Relay	CII	•	•	•	•	•	•	•	•	•	2A	28VDC/115VAC	2 form C, DPDT	2	N/A	135mW, 50mW	1.45 to 10.5VDC	DC	PC board, chassis mount, panel mount	PC pins, solder hooks	N/A	N/A	1,000 MΩ	N/A	QPL: MIL-R-39016/13, /37, /38
3SBH 1/5 Size Relay	CII	•	•	•	•	•	•	•	•	•	2A	28VDC/115VAC	4 form C, 4PDT	4	N/A	250mW	4 to 46VDC	DC	PC board, chassis mount, panel mount	PC pins, solder hooks	N/A	N/A	1,000 MΩ	N/A	QPL: MIL-R-39016/14, /53, /54
3SBM 1/5 Size Relay	CII	•	•	•	•	•	•	•	•	•	2A	28VDC/115VAC	4 form C, 4PDT	4	N/A	180mW	1.4 to 20VDC	Latching	PC board, chassis mount, panel mount	PC pins, solder hooks	N/A	N/A	1,000 MΩ	N/A	QPL: MIL-R-39016/31, /35, /36
FULL-SIZE RELAYS																									
3SAM Full-Size Relay	CII	•	•	•	•	•	•	•	•	•	2A	28VDC/115VAC	2 form C, DPDT	2	N/A	50mW or 75mW	15-99VDC	Latching	PC board, chassis mount, panel mount	PC pins, solder hooks, long leads	N/A	N/A	1,000 MΩ	N/A	QPL: MIL-R-5757/32
3SAT Full-Size Relay	CII	•	•	•	•	•	•	•	•	•	2A	28VDC/115VAC	2 form C, DPDT	2	N/A	40mW	Current Calibrated	DC	PC board, chassis mount, panel mount	PC pins, solder hooks, long leads	N/A	N/A	1,000 MΩ	N/A	QPL: MIL-R-5757/13
SF Full-Size Relay	CII	•	•	•	•	•	•	•	•	•	2A	28VDC/115VAC	2 form C, DPDT	2	N/A	140mW	1.8 to 40VDC	DC	PC board, chassis mount, panel mount	PC pins, solder hooks, long leads	40dB	0.4dB	10,000 MΩ	N/A	N/A
FW Full-Size Relay	CII	•	•	•	•	•	•	•	•	•	3A	28VDC/115VAC	2 form C, DPDT	2	N/A	1.0W	6.3 to 110VDC	DC	PC board, chassis mount, panel mount	PC pins, solder hooks, long leads	40dB	0.4dB	10,000 MΩ	N/A	QPL: MIL-R-5757/10
FW5A Full-Size Relay	CII	•	•	•	•	•	•	•	•	•	5A	28VDC/115VAC	2 form C, DPDT	2	N/A	1.0W	6.3 to 110VDC	DC	PC board, chassis mount, panel mount	PC pins, solder hooks, long leads	40dB	0.4dB	10,000 MΩ	N/A	N/A
SF5A Full-Size Relay	CII	•	•	•	•	•	•	•	•	•	5A	28VDC/115VAC	2 form C, DPDT	2	N/A	280mW	1.8 to 40VDC	DC	PC board, chassis mount, panel mount	PC pins, solder hooks, long leads	40dB	0.4dB	10,000 MΩ	N/A	N/A
07 Full-Size Relay	CII	•	•	•	•	•	•	•	•	•	10A	28VDC/115VAC	2 form C, DPDT	2	N/A	4.3W	6 to 120VDC	DC, AC, diode-suppressed	PC board, chassis mount, panel mount	PC pins, solder hooks, long leads	N/A	N/A	1,000 MΩ	N/A	QPL: MIL-R-5757/23

PRODUCT CATEGORY	Brand	INDUSTRIES									Contact Current Rating (A)	Contact Voltage Rating	Contact Arrangement	Contact Number of Poles	Contact Switching Power (W/VA)	Coil Power Rating (DC coil / bistable 1 coil/2 coils) (DC) (mW)	Coil Voltage Rating	Coil Magnetic System	Mounting Type	Terminal Type	Isolation (HF Parameter)	Insertion Loss (HF Parameter)	Insulation Initial Resistance (MΩ)	Contact Material	Key Agency Approvals
		1 AD&M	2 Appliances	3 Automotive	4 Communications	5 Energy	6 Industrial	7 Intelligent Building	8 Medical	9 Rail															
MIL-AERO RELAYS																									
HALF-SIZE RELAYS																									
HFW Half-Size Relay	CII	•									2A	28VDC/115VAC, 400Hz	2 form C, DPDT	2	N/A	1.0W	5 to 48VDC	DC	PC board, chassis mount, panel mount	PC pins, solder hooks	N/A	N/A	10,000 MΩ	N/A	QPL: MIL-R-39016/6
HMB Half-Size Relay	CII	•									2A	28VDC/115VAC, 400Hz	2 form C, DPDT	2	N/A	1.0W	6 to 26.5VDC	DC	PC board, chassis mount, panel mount	PC pins, solder hooks	N/A	N/A	10,000 MΩ	N/A	QPL: MIL-R-39016/22
HMS Half-Size Relay	CII	•									2A	28VDC/115VAC, 400Hz	2 form C, DPDT	2	N/A	680mW	5 to 36VDC	DC	PC board, chassis mount, panel mount	PC pins, solder hooks	N/A	N/A	10,000 MΩ	N/A	QPL: MIL-R-39016/44
LS Half-Size Relay	CII	•									2A	28VDC/115VAC, 400Hz	2 form C, DPDT	2	N/A	700mW	5 to 48VDC	Latching	PC board, chassis mount, panel mount	PC pins, solder hooks	45dB	0.6dB	10,000 MΩ	N/A	N/A
SR Half-Size Relay	CII	•									2A	28VDC/115VAC, 400Hz	4 form C, DPDT	4	N/A	1.8W	6 to 26.5VDC	DC	PC board, chassis mount, panel mount	PC pins, solder hooks	N/A	N/A	1,000 MΩ	N/A	QPL: MIL-R-39016/40
HFW4A Half-Size Relay	CII	•									4A	28VDC/115VAC, 400Hz	2 form C, DPDT	2	N/A	1.0W	5 to 48VDC	DC	PC board, chassis mount, panel mount	PC pins, solder hooks	N/A	N/A	10,000 MΩ	N/A	N/A
HFC5A Half-Size Relay	CII	•									5A	28VDC/115VAC, 400Hz	2 form C, DPDT	2	N/A	1.0W	5 to 26.5VDC	DC	PC board, chassis mount, panel mount	PC pins, solder hooks	N/A	N/A	1,000 MΩ	N/A	N/A
HFW5A Half-Size Relay	CII	•									5A	28VDC/115VAC, 400Hz	2 form C, DPDT	2	N/A	1.0W	5 to 26.5VDC	DC	PC board, chassis mount, panel mount	PC pins, solder hooks	N/A	N/A	10,000 MΩ	N/A	N/A
C Half-Size Relay	CII	•									10A	28VDC/115VAC, 400Hz	1 form C, SPDT	1	N/A	1.4W	6 to 26.5VDC	DC	PC board, chassis mount, panel mount	PC pins, solder hooks	N/A	N/A	1,000 MΩ	N/A	N/A
HIGH FREQUENCY RELAYS																									
MW3 Microwave Relay	CII	•									1A	28VDC/115VAC, 400Hz	2 form C, DPDT	2	N/A	675mW	5, 12, 18, 26.5 VDC	DC	PC board	PC pins, long leads	22dB	0.36dB	1,000 MΩ	N/A	N/A
MW3HP Microwave Relay	CII	•									1A	28VDC/115VAC, 400Hz	2 form C, DPDT	2	N/A	673mW	5, 6, 9, 12, 18, 26.5 VDC	DC	PC board	PC pins, long leads	22dB	0.36dB	1,000 MΩ	N/A	N/A
MW3S Microwave Relay	CII	•									1A	28VDC/115VAC, 400Hz	2 form C, DPDT	2	N/A	565mW	5, 6, 9, 12, 18, 26.5 VDC	DC	PC board	PC pins, long leads	22dB	0.36dB	1,000 MΩ	N/A	N/A
MW4 Microwave Relay	CII	•									1A	28VDC/115VAC, 400Hz	2 form C, DPDT	2	N/A	675mW	5, 12, 18, 26.5 VDC	DC	PC board	PC pins, long leads	18dB	0.27dB	1,000 MΩ	N/A	N/A
MW4S Microwave Relay	CII	•									1A	28VDC/115VAC, 400Hz	2 form C, DPDT	2	N/A	565mW	5, 6, 9, 12, 18, 26.5 VDC	DC	PC board	PC pins, long leads	18dB	0.27dB	1,000 MΩ	N/A	N/A
MW6 Microwave Relay	CII	•									1A	28VDC/115VAC, 400Hz	2 form C, DPDT	2	N/A	675mW	5, 12, 18, 26.5 VDC	DC	PC board	PC pins, long leads	18dB	0.38dB	1,000 MΩ	N/A	N/A
MID-RANGE RELAYS																									
FCB-205, 5 Amp Series Relay	CII	•									5A	28VDC, 115/200VAC 400HZ	2 form C, DPDT	2	N/A	1.6W	6, 12, 28, 48VDC; 115VAC	AC, DC	Socket, panel, PCB	Socket pins, solder pins, solder hooks	N/A	N/A	100 MΩ	N/A	M83536/1, M83536/2
FCB-405, 5 Amp Series Relay	CII	•									5A	28VDC, 115/200VAC 400HZ	4 form C, 4PDT	4	N/A	2.0W	6, 12, 28, 48VDC; 115VAC	AC, DC	Socket, panel, PCB	Socket pins, solder pins, solder hooks	N/A	N/A	100 MΩ	N/A	M83536/5, M83536/6
FCA-210; FCA-410; FCA-215; FCA-415 Series Relays	CII	•									10A/ 15A	28VDC, 115/200VAC 400HZ	4 form C, 4PDT for FCA-410/ FCA-415	2, 4	N/A	2.7W	6, 12, 28, 48VDC; 115VAC	AC, DC	Socket, panel, PCB	Socket pins, solder pins, solder hooks	N/A	N/A	100 MΩ	N/A	M83536/9, M83536/10, M83536/15, M83536/16
FC-325 Series Relay	CII	•									25A	28VDC, 115VAC	2 form C, DPDT	3	N/A	4.9W	28VDC/ 115VAC	AC, DC	Panel mount	Screw terminals, solder hooks	N/A	N/A	100 MΩ	N/A	MS27418
FCA-125; FCA-325; FCAC-325 Series Relays	CII	•									25A	28VDC, 115VAC 400HZ	2 form C, DPDT	1, 3	N/A	2.7W	6, 12, 28, 48VDC; 115VAC	AC, DC	Socket, panel, PCB	Socket pins, solder pins, solder hooks	N/A	N/A	100 MΩ	N/A	M6106/19, M83536/36, M83536/37, M83536/32, M83536/33
FCA-150, FCAC-150 Series Relay	CII	•									50A	28VDC	1 Form X (SPST-NO-DM); 1 Form X (SPST-NC-DM) W/AUX	1	N/A	2.7W	6, 12, 28VDC	DC	Panel mount	Threaded studs	N/A	N/A	100 MΩ	N/A	N/A
MIL-AERO CONTACTORS																									
D7, DH7, D16, DH16, D18, DH18 Series Contactor	Hartman	•									50A/60A	115VAC/400Hz	3PST, 3PDT, 3PDT-CO, 3PDT latching	3	20KVA	Various	28VDC or 115VAC	N/A	Panel	Stud	N/A	N/A	N/A	N/A	N/A
BH315, BH316 Contactor	Hartman	•									50A/60A	115VAC/400Hz	3PST-NO, DM	3	20KVA	Various	28VDC	N/A	Panel	Stud	N/A	N/A	N/A	N/A	N/A
MAP100; MAP101 Series Contactor	Kilovac	•									100A	12-900VDC	1 form X (SPST-NO) W/AUX	1	Contact factory	Economized coil	28VDC	DC	Side	Threaded	N/A	N/A	100 MΩ	N/A	N/A
D25, DH25, D31, DH31 Series Contactor	Hartman	•									100A/ 120A	115VAC/400Hz	3PST, 3PDT, 3PDT-CO	3	40KVA	Various	28VDC or 115VAC	N/A	Panel	Stud	N/A	N/A	N/A	N/A	N/A
K200 Series Contactor	Hartman	•									200A	28VDC	SPST-NO, DM	1	5600	Varies per specific p/n	28VDC	Side stable	Panel	Busbar	N/A	N/A	500 MΩ	Ag alloy	Tested to appropriate MIL-PRP-6106 specs
CAP202 Series Contactor	Kilovac	•									300A	12-900VDC	2 form X (DPST-NO)	2	Contact factory	Economized coil	28 to 32VDC	DC	Bottom mount	Threaded	N/A	N/A	50 MΩ	N/A	N/A
K400 Series Contactor	Hartman	•									400A	28VDC	SPST-NO, DM	1	11200	Varies per specific p/n	28VDC	Side stable	Panel	Busbar	N/A	N/A	500 MΩ	Ag alloy	Tested to appropriate MIL-PRP-6106 specs
KD400 Series Contactor	Hartman	•									400A	28VDC	SPDT-double make/break	1	11200	Varies per specific p/n	28VDC	Side stable	Panel	Busbar	N/A	N/A	500 MΩ	Ag alloy	Tested to appropriate MIL-PRP-6106 specs
K500 Series Contactor	Hartman	•									500A	28VDC	SPSP-NO, DM	1	14000	Varies per specific p/n	28VDC	Side stable	Panel	Busbar	N/A	N/A	500 MΩ	Ag alloy	Tested to appropriate MIL-PRP-6106 specs
CAP200 Series Contactor	Kilovac	•									500A	12-900VDC	1 form A (SPST-NO)	1	Contact factory	Economized coil	9 to 95VDC	DC	Bottom mount	Threaded	N/A	N/A	100 MΩ	N/A	N/A
MAP200; MAP201 Series Contactor	Kilovac	•									500A/ 350A	12-900VDC	1 form X (SPST-NO) W/AUX	1	Contact factory	Economized coil	28VDC	DC	Bottom	Threaded	N/A	N/A	100 MΩ	N/A	N/A
KHR500 Contactor	Kilovac	•									600A	28-1000VDC	1 form X (SPST-NO) W/AUX	1	Contact factory	Economized coil	24 to 28VDC	DC	Bottom	Threaded	N/A	N/A	100 MΩ	N/A	N/A
K1000 Series Contactor	Hartman	•									1000A	28VDC	SPST-NO, DM	1	28000	Varies per specific p/n	28VDC	Side stable	Panel	Busbar	N/A	N/A	500 MΩ	Ag alloy	Tested to appropriate MIL-PRP-6106 specs

PRODUCT CATEGORY	Brand	INDUSTRIES									Contact Current Rating (A)	Contact Voltage Rating	Contact Arrangement	Contact Number of Poles	Contact Switching Power (W/VA)	Coil Power Rating (DC coil / bistable 1 coil/2 coils) (DC) (mW)	Coil Voltage Rating	Coil Magnetic System	Mounting Type	Terminal Type	Isolation (HF Parameter)	Insertion Loss (HF Parameter)	Insulation Initial Resistance (MΩ)	Contact Material	Key Agency Approvals
		1 AD&M	2 Appliances	3 Automotive	4 Communications	5 Energy	6 Industrial	7 Intelligent Building	8 Medical	9 Rail															
MIL-AERO RELAYS																									
SOLID STATE RELAYS																									
MS 14 Series SSR Relay	Kilovac	•									350mA	400VDC	SPST-NO	1	N/A	N/A	3.8 to 32VDC	DC	PCB	THT	N/A	N/A	10 ⁹ Ω	N/A	N/A
DS11 Series DC Relay	Kilovac	•									2A	60VDC	SPST-NO	1	N/A	N/A	3.8 to 32VDC	DC	PCB	THT	N/A	N/A	10 ⁹ Ω	N/A	N/A
DS13 Series DC Relay	Kilovac	•									2A	60VDC	SPST-NO	1	N/A	N/A	3.8 to 32VDC	DC	PCB	THT	N/A	N/A	10 ⁹ Ω	N/A	DSCC PN: 90091-008
MS18 Series Relay	Kilovac	•									2A	80VDC	SPST-NO	1	N/A	N/A	25mAdc	DC	PCB	THT	N/A	N/A	10 ⁹ Ω	N/A	DSCC PN: 89116-006
JDS9 Series Relay	Kilovac	•									2A	250VDC	SPST-NO	1	N/A	N/A	3.8 to 32VDC	DC	PCB	THT	N/A	N/A	10 ⁹ Ω	N/A	N/A
PS12 Series Relay	Kilovac	•									10A	250VAC	SPST-NO	1	N/A	N/A	4 to 32VDC	DC	Panel	Screw	N/A	N/A	10 ⁹ Ω	N/A	DSCC PN: 86031-001
JPS10 Series Relay	Kilovac	•									25A	250VAC	SPST-NO	1	N/A	N/A	3.8 to 32VDC	DC	Panel	Solder hook	N/A	N/A	10 ⁹ Ω	N/A	MIL PN: M28750/10-001Y & M28750/10-002Y
TIME DELAY RELAYS																									
TD228 Relay	CII	•									10A	28VDC/115VAC/200VAC/400Hz	2 Form C (DPDT)	2	N/A	4.2W	28VDC	Fixed delay on operate	Socket, panel, PCB	Socket Pins, solder pins, solder hooks	N/A	N/A	1,000 MΩ	N/A	MIL-PRF-83726/28
TD229 Relay	CII	•									10A	28VDC/115VAC/200VAC/400Hz	2 Form C (DPDT)	2	N/A	4.2W	28VDC	Fixed delay on release	Socket, panel, PCB	Socket Pins, solder pins, solder hooks	N/A	N/A	1,000 MΩ	N/A	MIL-PRF-83726/29
TD230 Relay	CII	•									10A	28VDC/115VAC/200VAC/400Hz	2 Form C (DPDT)	2	N/A	4.2W	28VDC	Adjustable delay on operate	Socket, panel, PCB	Socket Pins, solder pins, solder hooks	N/A	N/A	1,000 MΩ	N/A	MIL-PRF-83726/30
TD231 Relay	CII	•									10A	28VDC/115VAC/200VAC/400Hz	2 Form C (DPDT)	2	N/A	4.2W	28VDC	Adjustable delay on release	Socket, panel, PCB	Socket Pins, solder pins, solder hooks	N/A	N/A	1,000 MΩ	N/A	MIL-PRF-83726/31
POWER RELAYS																									
FORCE-GUIDED RELAYS																									
SR2M 2 Pole Force Guided Relay	Schrack					•	•	•	•	•	6A	250VAC	1 form A + 1 form B 1NO + 1NC, 2 form C 2CO	A: 1 B: 1 C: 2	1500VA	700mW	5 to 110VDC	DC	PCB, socket	THT	N/A	N/A	N/A	AgNi	cULus, VDE, TÜV, CCC
SRL7 7 Pole Force Guided Relay	Schrack					•	•	•	•	•	6A	250VAC	5 form A + 2 form B, 5NO + 2NC	A: 5; B: 2	1500VA	700mW	5 to 110VDC	DC	PCB	THT	N/A	N/A	N/A	AgSnO	cULus, VDE, TÜV
SR4m 4 Pole Force Guided Relay	Schrack					•	•	•	•	•	8A	250VAC	3 form A + 1 form B 3NO + 1NC 2 form A + 2 form B contacts 2 NO + 2 NC	A: 2, 3 B: 1, 2	2000VA	800mW	5 to 110VDC	DC	PCB	THT	N/A	N/A	N/A	AgSnO	cULus, VDE, TÜV, CCC
SR6-V23050 4 & 6 Pole Force Guided Relay	Schrack					•	•	•	•	•	8A	250VAC	3 form A + 1 form B 3 NO + 1 NC 2 form A + 2 form B 2 NO + 2 NC	A: 2, 3 B: 1, 2	2000VA	800mW, 1200mW	5 to 110VDC	DC	PCB	THT	N/A	N/A	N/A	AgSnO	cULus, VDE, TÜV, CCC
SRAZ 2 & 6 Pole Force Guided Relay on Din Rail	Schrack					•	•	•	•	•	8A	250VAC	3 form A + 3 form B, 3NO + 3NC 4 form A + 2 form B, 4 NO + 2NC 5 form A + 1 form B, 5 NO + 1NC	A: 3, 4, 5 B: 1, 2, 3	1500VA, 2000VA	1200mW	6 to 115VAC/ VDC, 230VAC	DC, AC	DIN rail	Screwless	N/A	N/A	N/A	AgSnO	CE
INDUSTRIAL PANEL PLUG-IN																									
KHA Series Relay	Potter & Brumfield					•	•	•	•	•	1A to 5A	240VAC	2 form C (CO), 4 form C (CO)	2, 4	N/A	800 to 1100mW/1.2 to 1.5A	5 to 240VDC, 6 to 240VAC	AC, DC	Socket, PCB, flange	THT, solder	N/A	N/A	1000 MΩ	Ag, AgCdO, Au-AgNi, Au overlay Ag, Au diffused Ag	UL
GP/TR Series Relay	Agastat	•				•	•	•	•	•	1A/10A	125VDC/120VAC	4 form C, 4PDT	4	NA	6W/6VA	24, 120, 220VAC	AC, DC	Socket	Flat base pins. Screw terminal sockets are available.	N/A	N/A	N/A	Varies	CSA Approved, RU
MT Multimode Relay	Schrack					•	•	•	•	•	4A/10A	240VAC	2 form C 2 CO, 3 form C 3 CO	C: 2, 3	500/2500VA	1100 to 1300mW, 2.2 to 2.3VA	6 to 220VDC, 6 to 230VAC	DC, AC	Socket	Plug-in	N/A	N/A	N/A	AgNi 90/10, AgNi90/10 Au plated	cULus, VDE
Relay Packages SNR, RT, XT, PT	Schrack					•	•	•	•	•	6A/7A/8A/10A/12A	240VAC	1 form C 1CO, 2 form C 2CO, 3 form C 3CO, 4 form C 4CO	C: 1, 2, 3, 4	1500VA, 4000VA, 2000VA, 3000VA, 2500VA, 1500VA	170 to 950mW, 0.75 to 1VA	12 to 24VDC, 24 to 230VAC	DC, AC	DIN rail	Screw clamps	N/A	N/A	N/A	AgSnO, AgNi 90/10, AgNi90/10 Au plated	cULus, VDE, CE
Slim Interface Relay SNR	Schrack					•	•	•	•	•	6A	250VAC	1 form C 1CO	C: 1	1500VA	170 to 220mW	6 to 110VDC	DC	PCB, socket	THT	N/A	N/A	N/A	AgSnO, AgSnO Au plated	cULus, VDE
Interface Relay RT1 & RT2	Schrack					•	•	•	•	•	8A/16A	250VAC	1 form C 1CO, 2 form C 2CO	C: 1, 2	3000VA, 4000VA, 2000VA	400 to 420mW, 0.75VA	6 to 110VDC, 24 to 230VAC	DC, AC	PCB, socket	THT	N/A	N/A	N/A	AgNi 90/10, AgNi90/10 Au plated	cULus, VDE
Interface Relay XT	Schrack					•	•	•	•	•	8A/16A	240VAC	1 form C 1CO, 2 form C 2CO	C: 1, 3	4000VA, 2000VA	400 to 420mW, 0.75VA	12 to 110VDC, 24 to 230VAC	DC, AC	Socket	THT	N/A	N/A	N/A	AgNi 90/10	cULus, VDE, Lloyds
KBP Series Relay	Potter & Brumfield					•	•	•	•	•	10A	120VAC	2 form C (CO), 4 form C (CO), 5 form C (CO)	2, 4, 5	N/A	2.42 to 2.8W/5.05 to 8.2VA	12 to 220VDC, 24 to 240VAC	AC, DC	Socket	Octal style plug-in	N/A	N/A	100 MΩ	Ag, AgCdO	UL
KRP/KRPA Series Relay	Potter & Brumfield					•	•	•	•	•	10A	240VAC	1 form C (CO), 2 form C (CO), 3 form C (CO)	1, 2, 3	N/A	1.15 to 1.3W/2.01 to 2.1VA	6 to 220VDC, 6 to 240VAC	AC, DC	Socket	Octal style plug-in	N/A	N/A	KRPA: 1000 MΩ, KA: 100 MΩ	Ag, AgCdO	UL
KUEP Series Relay	Potter & Brumfield					•	•	•	•	•	10A	150VDC	1 form X (NO-DM), 2 form A (NO), 2 form C (CO)	X:1; A:2; C:2	N/A	1.2W to 1.8W/2 to 2.9VA	5 to 125VDC, 6 to 240VAC	AC, DC	Socket, bracket, flange	QC, solder, THT	N/A	N/A	100 MΩ	AgCdO, AgSnOInO	UL, CSA
KUL Series Relay	Potter & Brumfield					•	•	•	•	•	10A	240VAC	1 form C, (1 CO); 2 form C, (2 CO); 3 form C, (3 CO)	1, 2, 3	N/A	1.6W dual coil/1.25W single coil	12 to 110VDC, 24 to 120, 240VAC	AC, DC	Socket, bracket	.187 QC, PCB terminals	N/A	N/A	100 MΩ	Ag, AgCdO	UL, CSA
KU/KUP Series Relay	Potter & Brumfield					•	•	•	•	•	10A	240VAC	1 form X (NO-DM), 1-3 form A (NO), 1-4 form C (CO)	A: 1, 2, 3 C: 1, 2, 3, 4 X: 1	N/A	1.2 to 1.85W/2.0 to 2.9 VA	5 to 110VDC, 6 to 240VAC	DC, AC	Socket, PCB, bracket, flange	QC, THT	N/A	N/A	100 MΩ	Ag, AgCdO, AgSnOInO	UL, CSA
KUP93 Series Relay	Potter & Brumfield					•	•	•	•	•	10A	28VDC/240VAC	3 form C (3PDT)	3	N/A	1.2W / 2.7VA	12 to 24VDC, 24 to 240VAC	AC, DC	Socket	QC	N/A	N/A	100 MΩ	Fine Ag, AgCdO	UL, CSA
Power Relay RM	Potter & Brumfield					•	•	•	•	•	10A/16A/25A/30A	230VAC/400VAC	2 form C 2 CO, 3 form C 3 CO, 2 form A 2NO, 3 form A 3NO, 1 form Z 1NO + 1NZ, 1 form X 1 NO	A: 2, 3 C: 2, 3 X: 1, 2: 1	6000VA, 3800VA, 7500VA	1100 to 1700mW, 2.2 to 2.7VA	6 to 220VDC, 6 to 400VAC	DC, AC	PCB, socket, flange, DIN rail	Plug-in, THT, quick connect	N/A	N/A	N/A	AgCdO, AgNi 90/10	cULus, VDE, CE
Miniature Relay PT	Schrack					•	•	•	•	•	12A/10A/7A	240VAC	2 form C 2CO, 3 form C 3CO, 4 form C 4CO	C: 2, 3, 4	3000VA, 2500VA, 1500VA	750 to 950mW, 1VA	6 to 220VDC, 6 to 230VAC	DC, AC	PCB, socket	Plug-in, THT	N/A	N/A	N/A	AgNi 90/10, AgNi90/10 Au plated	cULus, VDE, Lloyds
K10 Series Relay	Potter & Brumfield					•	•	•	•	•	15A	120VAC	2 form A (NO), 2 form B (NO), 2 form C (NO), 1 form A (NO) + 1 form B (NC)	1, 2	N/A	900 to 1100mW/ 1.2 to 1.5VA	6 to 110VDC, 6 to 240VAC	AC, DC	Socket, PCB, bracket	QC, THT	N/A	N/A	N/A	Ag, AgCdO, AgSnOInO	UL, CSA
KUMP Series Relay	Potter & Brumfield					•	•	•	•	•	15A	277VAC	1 to 3 form A (NO); 1 to 3 form B (NC); 1 to 3 form C (CO); 1 form X (NO-DM); 1 form Y (NC-DB); 1 form Z (CO-DB-DM)	1,2,3	N/A	1.2 to 1.3W/2.8 to 2.9VA (AC coil)	5 to 110VDC, 6 to 240VAC	DC, AC	Socket, bracket, flange	QC, THT	N/A	N/A	100 MΩ	AgCdO, AgSnOInO	UL, CSA
KUHP Series Relay	Potter & Brumfield					•	•	•	•	•	20A/30A	240VAC	1 form C (CO), 1 form A (NO), 1 form B (NC), 2 form C (CO), 2 form A (NO), 2 form B (NC)	1, 2	4800/7200VA	1.13 to 1.30W/2.5 to 2.9 VA	6 to 110VDC, 6 to 277VAC	DC, AC	Socket, bracket, flange	Solder, THT, QCQC, solder, PCB	N/A	N/A	100 MΩ	AgCdO, AgSnOInO	UL, CSA

PRODUCT CATEGORY	Brand	INDUSTRIES									Contact Current Rating (A)	Contact Voltage Rating	Contact Arrangement	Contact Number of Poles	Contact Switching Power (W/VA)	Coil Power Rating (DC coil / bistable 1 coil/2 coils) (DC) (mW)	Coil Voltage Rating	Coil Magnetic System	Mounting Type	Terminal Type	Isolation (HF Parameter)	Insertion Loss (HF Parameter)	Insulation Initial Resistance (M Ω)	Contact Material	Key Agency Approvals
		1 AD&M	2 Appliances	3 Automotive	4 Communications	5 Energy	6 Industrial	7 Intelligent Building	8 Medical	9 Rail															

POWER RELAYS

STANDARD POWER RELAYS																											
PCH Miniature PCB Relay	OEG			•				•	•				3A/5A/10A	277VAC/30VDC	1 form A (NO)	1	1400VA/150W (NO) 850VA/90W (NC)	200/400mW	3 to 48VDC	DC, sensitive	PCB	THT	N/A	N/A	N/A	AgSnO2	UL, VDE, CSA
OJ/OJE/T77 Relay	OEG			•				•	•				3A/5A/8A/10A	250VAC/28VDC	1 form A, (NO)	1	720 to 2500VA/90 to 240W	200/250/450mW	3 to 48 VDC	DC, sensitive	PCB	THT	N/A	N/A	N/A	Ag, AgSnO, AdCdO	UL, VDE, CSA
OSA Relay	OEG			•									3A/5A	240VAC/30VDC	2 form A, (2 NO)	2	300VA/72W (DM3) 1100VA/150W (DM5)	540mW	5 to 48VDC	DC	PCB	THT	N/A	N/A	10 M Ω	AgSnO	UL, VDE, CSA
PCN 3A Slim PCB Relay	TE/OEG			•		•		•	•				3A/5A	250VAC	1 form A (NO)	1	750VA/1250VA	120mw	3 to 24VDC	DC	PCB	THT	N/A	N/A	N/A	AgNi	VDE, UL
PCJ Miniature PCB Relay	OEG					•		•	•				3A/5A (WG type)	250VAC	1 form A (NO)	1	750VA/1250VA (WG type)	200mW	5 to 24VDC	DC	PCB	THT	N/A	N/A	10 M Ω	AgNi	UL, VDE, CSA
OJT Miniature PCB Relay	OEG			•				•	•				5A	250VAC	1 form A, (NO)	1		200/450mW	3 to 48 VDC	DC, sensitive	PCB	THT	N/A	N/A	N/A	AgSnO2	UL, VDE, CSA
REL Miniature PCB Relay	Schrack			•		•		•	•				5A	250VAC	1 form A (NO)	1	1250VA	360mW	5 to 48VDC	DC	PCB	THT	N/A	N/A	N/A	AgNi90/10, AgCdO	VDE, UL
PE Power PCB Relay	Schrack			•		•		•	•				5A	250VAC	1 form C (CO), 1 form A (NO)	1	1250VA	200mW	3 to 48VDC	AC, DC, bistable	PCB	THT	N/A	N/A	>10 ⁹ Ω	AgNi 90/10, AgSnO2	UL, VDE
SDT/SDT-R Miniature PCB Relay	OEG			•									5A/10A	250VAC/30VDC	1 form A (NO)	1	1250VA, 150W (LMR) 2500VA, 330W (DMR)	250/540mW	5 to 48VDC	DC	PCB	THT	N/A	N/A	N/A	AgSnOInO/AgSnO2	UL, VDE, CSA
PB-V23088 Miniature Relay	Schrack			•		•		•	•				6A	250VAC	1 form C (CO) or 1 form A (NO)	1	2500VA	360mW	5 to 36VDC	DC	PCB	PCB	N/A	N/A	N/A	AgNi 90/10, AgSnO2	VDE, UL
RE Miniature PCB Relay	Schrack			•		•		•	•				6A	250VAC	1 form A (NO)	1	1500VA	200mW	5 to 48VDC	DC	PCB	THT	N/A	N/A	N/A	AgCdO, AgNi 0.15, AgNi 90/10, AgNi0.15 Au plated	VDE, UL
SNR-V23092 Power PCB Relay	Schrack			•		•		•	•				6A	250VAC	1 form C (CO) or 1 form A (NO)	1	1500VA	170mW	5 to 60VDC	DC	PCB	THT	N/A	N/A	N/A	AgSnO2, AgNi 90/10, AgSnO2, Au plated	VDE, UL
V23148 Power PCB Relay	Schrack							•	•				7A	250VAC	1 form A (NO), 1 form B (NC), 1 form C (CO)	1	1750VA	1317mW	6 to 48VDC	DC, sensitive, bistable 1 coil	PCB	THT	N/A	N/A	N/A	AgNi 90/10	UL
MSR-V23061-T75 Power PCB Relay	Schrack			•		•		•	•				8A	250VAC	1 form C (CO) or 1 form A (NO)	1	2000VA	230mW	3 to 60VDC	DC	PCB	THT	N/A	N/A	N/A	AgNi90/10, AgSnO2	VDE, UL
RYII Power PCB Relay	Schrack			•		•		•	•				8A	250VAC	1 form C (CO); 1 form A (NO); 1 form B (NC)	1	2000VA	230mW	5 to 60VDC	DC	PCB	THT, THR	N/A	N/A	N/A	AgNi0.15, AgSnO2, AgNi0.15 Au plated	VDE, UL
RT2 Power PCB Relay	Schrack			•		•		•	•				8A	250VAC	2 form A (NO), 2 form C (CO)	2	2000VA	400 to 420mW, 400 to 430mW, 600 to 700mW	5 to 110VDC/24 to 230VAC	AC, DC, bistable	PCB, plug-in	THT, THR	N/A	N/A	N/A	AgNi90/10, AgNi90/10 Au plated, AgSnO	UL, CSA, VDE
OMI/OMIH/OMIT Power PCB Relay	OEG			•				•					10A/16A	250VAC/30VDC	1 form A (NO), 1 form C (CO)	1	2500VA/300W 4000VA/480W	540/720mW	5 to 48VDC	DC, sensitive	PCB	THT	N/A	N/A	10 M Ω	AgSnO	UL, VDE, CSA
RT1 Bifurcated Relay	Schrack			•		•		•	•				12A/16A	250VAC	1 form C (CO)	1	3000/4000VA	190 to 220mW, 400 to 420mW	5 to 110VDC	DC	PCB, plug-in	THT	N/A	N/A	N/A	AgNi90/10, AgNi90/10 Au plated	UL, CSA, VDE, CQC
RT1 Power PCB Relay	Schrack			•		•		•	•				12A/16A	250 VAC	1 form A (NO), 1 form C (CO)	1	3000/4000VA	400 to 420mW, 400 to 430mW, 600 to 700mW	5 to 110VDC/24 to 230VAC	AC, DC, bistable	PCB, plug-in	THT, THR	N/A	N/A	N/A	AgNi90/10, AgNi90/10 Au plated, AgSnO	UL, CSA, VDE
RZ Power PCB Relay - 1 Pole	Schrack			•		•		•	•				12A/16A	250VAC	1 form A (NO), 1 form C (CO)	1	3000/4000VA	400mW	3 to 48VDC	DC	PCB	THT	N/A	N/A	N/A	AgNi90/10, AgSnO	UL, VDE, CQC
410 63 Relay	Schrack			•									16A	250VAC	1 form A (SPST-NO); 1 form B (SPST-NC)	1	4000VA	360mW	6 to 48VDC	DC	PCB	THT/QC (#250)	N/A	N/A	N/A	AgCdO	UL (US and Canada) VDE
410 83 Relay	Schrack			•									16A	250VAC	1 form X (NO-DM)	1	4000VA	360mW	6 to 60VDC	DC	PCB	THT/QC (#250)	N/A	N/A	N/A	AgNi	UL, VDE, CSA
OZ/OZT Relay	OEG			•									16A	240VAC/24VDC	1 form A (NO), 1 form C (CO)	1	3840/380W	540mW/720mW	5 to 48VDC	DC, sensitive	PCB	THT	N/A	N/A	1000 M Ω	AgSnO	UL, VDE, CSA
RF Power Relay	OEG			•									16A	250VAC	1 form A (NO), 1 form B (NC)	1	4000VA	400mW	5 to 60VDC	DC	PCB	THT/QC (#250)	N/A	N/A	N/A	AgNi90/10	UL, VDE, CSA
RT1 Inrush Power Relay	Schrack			•		•		•	•				16A	250VAC	1 form A (NO)	1	4000VA	400 to 420mW, 400 to 650mW (bistable)	5 to 110VDC	DC, monostable, bistable, 1 and 2 coil	PCB, plug-in	THT	N/A	N/A	N/A	AgNi90/10, AgSnO	UL, VDE
RTX Power PCB Relay	Schrack					•		•	•				16A	250VAC	1 form A (NO)	1	4000VA	650/665mW	5 to 48VDC	bistable, 1 and 2 coil	PCB	THT	N/A	N/A	N/A	W (pre-run contact) + AgSnOs	UL, VDE
PCF Miniature Relay	OEG			•									25A	250VAC	1 form A (NO)	1	6370VA	900mW	6 to 24VDC	DC	PCB	THT/QC (#250)	N/A	N/A	1000 M Ω	AgCdO, AgSnO	UL, VDE, CSA
PCFN Solar Relay	OEG			•									26A	277A	1 form A (NO)	1	7200VA	1.5W/200mW hold power	12VDC	DC	PCB	THT	N/A	N/A	N/A	AgSnO	UL, VDE, CSA
T92 Series Relay	Potter & Brumfield			•		•		•	•				30A	400VAC	2 form A (NO), 2 form C (CO)	2	7500VAC	1.7W/4.0VA	6 to 110VDC/12 to 277VAC	AC, DC	Panel mount, PCB	THT, QC	N/A	N/A	>10 ⁹ Ω	AgCdO, AgSnInO	UL, CSA, VDE
T9G Series Relay	Potter & Brumfield			•		•		•	•				30A	250VAC	1 form A (NO), 1 form B (NC), 1 form C (CO)	1	7500VAC	1W/900mW	6 to 48VDC	DC	PCB, panel mount	THT, QC	N/A	N	>10 ⁹ Ω	AgSnO	UL, CSA
T9E Series Relay	Potter & Brumfield			•		•		•	•				30A	250VAC	1 form A (NO), 1 form C (CO)	1	7500VAC	1W/900mW	6 to 48VDC	DC	PCB, panel mount	THT, QC	N/A	N	>10 ⁹ Ω	AgSnOInO (AgCdO optional)	VDE, UL
T90 Series Relay	Potter & Brumfield			•		•		•	•				30A	240VAC	1 form A (NO), 1 form B (NC), 1 form C (CO)	1	7500VAC	1W/900mW	6 to 48VDC	DC	PCB, panel mount	THT, QC	N/A	N	>10 ⁹ Ω	AgCdO, AgSnInO	UL, CSA
AC30 Series Contactor	Kilovac			•									30A/60A	600VAC	3 form A (3 NO)	3	Contact factory	DC	9 to 95VDC	DC	Panel	Screw	N/A	N/A	100 M Ω	N/A	N/A
T9S Solar Relay	Potter & Brumfield					•		•	•				35A	277VAC	1 form A (NO)	1	8750VAC	2.25W/350mW hold power	12VDC	DC	PCB	THT	N/A	N/A	N/A	AgNi	UL, VDE
EW60 PCB Relay	TE Connectivity					•		•	•				60A	250VAC	1 form A, NO	1	15000VA	3W	12, 24VDC	bistable 1 and 2 coil	PCB	PCB	N/A	N/A	N/A	AgSnO2	UL
FM200 Series Contactor	Kilovac			•									200A	480VAC	1 form A (NO) to 3 form A (3 NO)	1,2 or 3	Contact factory	AC or DC	12, 24VDC; 115, 240VAC	AC, DC	Panel	Screw	N/A	N/A	100 M Ω	N/A	N/A

SOLID STATE RELAYS																											
IAC Input Module	Potter & Brumfield					•		•	•				50mA	30VDC	1 form A (SPST-NO)	1	N/A	N/A	90 to 140V	AC	PCB	THT	N/A	N/A	N/A	N/A	UL
IDC Input Module	Potter & Brumfield					•		•	•				50mA	30VDC	1 form A (SPST-NO)	1	N/A	N/A	3 to 32V	DC	PCB	THT	N/A	N/A	N/A	N/A	UL
IACM Input Module	Potter & Brumfield					•		•	•				50mA	30VDC	1 form A (SPST-NO)	1	N/A	N/A	240VAC/VDC	AC	PCB	THT	N/A	N/A	N/A	N/A	UL
IDCM Input Module	Potter & Brumfield					•		•	•				50mA	30VDC	1 form A (SPST-NO)	1	N/A	N/A	10 to 60VDC	DC	PCB	THT	N/A	N/A	N/A	N/A	UL
OAC Output Module	Potter & Brumfield					•		•	•				up to 3A	24VAC to 280VAC	1 form A (SPST-NO)	1	N/A	N/A	3 to 32V	AC	PCB	THT	N/A	N/A	N/A	N/A	UL
ODC Output Module	Potter & Brumfield					•		•	•				up to 3A	3VDC to 250VDC	1 form A (SPST-NO)	1	N/A	N/A	3 to 250VDC	DC	PCB	THT	N/A	N/A	N/A	N/A	UL
OACM Output Module	Potter & Brumfield					•		•	•				up to 3A	24VAC to 280VAC	1 form A (SPST-NO)	1	N/A	N/A	24 to 280VAC	AC	PCB	THT	N/A	N/A	N/A	N/A	UL
ODCM Output Module	Potter & Brumfield					•		•	•				up to 3A	60VDC	1 form A (SPST-NO)	1	N/A	N/A	5 to 250VDC	DC	PCB	THT	N/A	N/A	N/A	N/A	UL
SSR Series Relay	Potter & Brumfield					•		•	•				Up to 125A	24 to 280VAC or 3 to 32VDC	1 form A (SPST-NO)	1	N/A	N/A	120/240VAC, 480VAC	AC, DC	Panel mount	Screw or quick connect	N/A	N/A	N/A	N/A	UL

PRODUCT CATEGORY	Brand	INDUSTRIES									Contact Current Rating (A)	Contact Voltage Rating	Contact Arrangement	Contact Number of Poles	Contact Switching Power (W/VA)	Coil Power Rating (DC coil / bistable 1 coil/2 coils) (DC) (mW)	Coil Voltage Rating	Coil Magnetic System	Mounting Type	Terminal Type	Isolation (HF Parameter)	Insertion Loss (HF Parameter)	Insulation Initial Resistance (MΩ)	Contact Material	Key Agency Approvals
		1	2	3	4	5	6	7	8	9															
		AD&M	Appliances	Automotive	Communications	Energy	Industrial	Intelligent Building	Medical	Rail															
ROTARY RELAYS																									
MDR Series Relay	Potter & Brumfield	•				•	•				10A/ 3A/ 0.8A	115VAC/ 28VDC/ 125VDC	4 form C (4PDT) through 24 form C (4PDT).	4 to 24	NA	5 to 22W	115 VAC, 440 VAC, 28 VDC, and 125 VDC	Non-latching and latching types	Surface mount	Screw terminals	N/A	N/A	100MΩ	AgCdO, and Ag	N/A
SIGNAL RELAYS																									
JW Series Reed Relays (JWD/JWS)	Potter & Brumfield		•		•	•	•	•	•		1A, 1B, 2A: 500mA, 20VDC 1C: 500mA, 10VDC	1A, 1B, 2A: 20VDC/ 500mA 1C: 10VDC/ 500mA/ 10mA	1 form A (1 NO), 2 form A (2 NO), 1 form B (NC), 1 form C, 1CO	A: 1, 2 B: 1 C: 1	A, B: 10W C: 3W	50 to 288mW	5 to 24VDC	monostable, DC (website)	PCB	THT	N/A	N/A	1010Ω at 100VDC	Ru	UL
OUAZ Relay	OEG		•		•	•	•	•	•		1A	24VDC/120VAC	1 form A, (1 NO), 1 form C, 1 CO	1	30W, 120VA	200mW, 450mW	5 to 24VDC	monostable, DC	PCB	THT	N/A	N/A	N/A	AgPd alloy	UL
P1 Relay	Axicom					•	•	•	•	•	1A	125VDC/ 150VAC	1 form C (CO)	1	30W, 60VA	30 to 128mW	3 to 24VDC	monostable, bistable 1 coil, bistable 2 coil	PCB	THT, SMT	30.0dB/ 18.0dB	0.12dB/ 1.90dB	N/A	PdNi, AuRh covered	UL
T81 Series Relay	Potter & Brumfield		•		•	•	•	•	•		1A	24VDC/ 120VAC	1 form C (CO)	1	120VA, 30W	200mW, 450mW	5 to 24VDC	monostable, DC	PCB	THT	N/A	N/A	>10 ⁹ Ω	Au overlay, AgPd alloy	UL
TSC Relay	OEG		•		•	•	•	•	•		1A	24VDC/ 120VAC	1 form C (CO)	1	120VA, 24W	150mW, 300mW	5 to 24VDC	monostable, DC	PCB	THT	N/A	N/A	>10 ⁹ Ω	AgNi alloy	UL
EGP/ETR Series Relay	Agastat	•				•	•				1A/10A	125VDC/ 120VAC	4 form C, 4PDT	4	NA	6W/6VA	24, 120, 220VAC	AC, DC	Socket	Flat base pins. Screw terminal sockets are available.	N/A	N/A	N/A	Varies	CSA Approved
W11 Relay	Axicom		•		•	•	•	•	•		1.25A/3A	120VDC/ 125VAC	1 form C (CO)	1	30 to 72W/ 60 to 360VA	200 to 450mW	1.5 to 24VDC	monostable	PCB	THT	N/A	N/A	>10 ⁹ Ω	1.25A-AgPd, Au plated, AgNi, Au plated 3A-AgNi	UL
Card Relay SN	Axicom		•		•	•	•	•	•	•	up to 2A	220VDC/ 250VAC	N/A	4, 6	N/A	658 to 878mW	5 to 60VDC	neutral, monostable	N/A	N/A	N/A	N/A	N/A	Varies	N/A
FP2 Relay	Axicom		•		•	•	•	•	•		2A	220VDC/ 250VAC	2 form C (CO)	2	60W/62.5VA	80mW to 300mW	3 to 48VDC	monostable, bistable 1 coil, bistable 2 coil	PCB	THT	40.2dB/ 22.3dB	0.03dB/ 0.25dB	>10 ⁹ Ω	AgNi, Au covered	UL
FT2 Relay	Axicom		•		•	•	•	•	•		2A	220VDC/ 250VAC	2 form C (CO)	2	60W/62.5VA	200mW	3 to 48VDC	monostable	PCB	THT	30.6dB/ -13.7dB	0.02dB/ 0.50dB	>10 ⁹ Ω	PdRu, Au covered	UL
FU2 Relay	Axicom		•		•	•	•	•	•		2A	220VDC/ 250VAC	2 form C (CO)	2	60W/62.5VA	200mW	3 to 48VDC	monostable	PCB	SMT	4.0dB/ 15.1dB	0.03dB/ 0.60dB	>10 ⁹ Ω	PdRu, Au covered	UL
FX2 Relay	Axicom		•		•	•	•	•	•		2A	220VDC/ 250VAC	2 form C (CO)	2	60W/62.5VA	80mW to 300mW	3 to 48VDC	monostable, bistable 1 coil, bistable 2 coil	PCB	THT	34.0dB/ 15.1dB	0.03/ 0.60dB	>10 ⁹ Ω	PdRu, Au covered	UL
IM B Relay	Axicom		•		•	•	•	•	•		2A	220VDC/ 250VAC	1 form A (1 NO)	1	60W/62.5VA	140mW	1.5 to 24VDC	monostable, 1 coil	PCB	THT, SMT	37.0dB/ 18.8dB	0.03dB/ 0.33dB	>10 ⁹ Ω	PdRu, Au covered	UL
IM E Relay	Axicom		•		•	•	•	•	•		2A	220VDC/ 250VAC	2 form A, 2 NO	2	60W/62.5VA	140mW	1.5 to 24VDC	monostable, 1 coil	PCB	THT, SMT	37.0dB/ 18.8dB	0.03dB/ 0.33dB	>10 ⁹ Ω	PdRu, Au covered	UL
MT2 Relay	Axicom		•		•	•	•	•	•		2A	220VDC/ 250VAC	2 form C (CO)	2	60W/62.5VA	150 to 550mW	3 to 48VDC	monostable	PCB	THT	-31.8dB/ -14.2dB	-0.02dB/ -0.97dB	>10 ⁹ Ω	AgNi, Au covered	UL
P2 Relay	Axicom	FIN 100			•	•	•	•	•		2A	220VDC/ 250VAC	2 form C, 2 CO	2	60W/62.5VA	140mW/ 70mW/ 140mW	2.4 to 24VDC	monostable, bistable 1 coil, bistable 2 coil, monostable overmolded	PCB	THT, SMT	39.0dB/ 20.7dB	0.02/ 0.27dB	>10 ⁹ Ω	AgNi, Au covered	UL
D2n Relay	Axicom		•		•	•	•	•	•		3A	220VDC/ 250VAC	2 form C, 2CO	2	60W/125VA	150 to 700mW	3 to 48VDC	monostable	PCB	THT	-39.0/ -20.7dB	-0.02dB/ -0.27dB	>10 ⁹ Ω	AgNi, Au covered	UL
IM C Relay	Axicom		•		•	•	•	•	•		up to 4A	220VDC/ 250VAC	1 form C (CO)	1	60W/62.5VA	140mW	1.5 to 24VDC	monostable 1 coil, bistable 1 coil	PCB	THT, SMT	37.0dB/ 18.8dB	0.03dB/ 0.33dB	>10 ⁹ Ω	PdRu, Au covered	UL
IM Relay	Axicom	FIN 100			•	•	•	•	•		up to 5A	220VDC/ 250VAC	2 form C (CO)	2	60W/62.5VA	50 to 200mW	1.5 to 24VDC	monostable 1 coil, bistable, 1 coil	PCB	THT, SMT	37.0dB/ 18.8dB	0.03dB/ 0.33dB	>10 ⁹ Ω	PdRu, Au covered / AgNi, Au covered	UL
Cradle Relay N-B104/B110/B112	Axicom		•		•	•	•	•	•	•	up to 5A	220VDC/ 250VAC	N/A	A: 4, 6 B: 2	N/A	170 to 1700mW	5 to 60VDC	neutral, monostable	N/A	N/A	N/A	N/A	N/A	Varies	N/A
Cradle Relay N-B604/B610/B612	Axicom		•		•	•	•	•	•	•	up to 5A	220VDC/ 250VAC	N/A	A: 4, 6 B: 2	N/A	170 to 1700mW	5 to 60VDC	neutral, monostable	N/A	N/A	N/A	N/A	N/A	Varies	N/A
Cradle Relay N-C104/C110/C112	Axicom		•		•	•	•	•	•	•	up to 5A	220VDC/ 250VAC	N/A	A: 4, 6 B: 2	N/A	170 to 1700mW	5 to 60VDC	neutral, monostable	N/A	N/A	N/A	N/A	N/A	Varies	N/A
Cradle Relay N-C404/C410	Axicom		•		•	•	•	•	•	•	up to 5A	220VDC/ 250VAC	N/A	A: 4, 6 B: 2	N/A	170 to 1700mW	5 to 60VDC	neutral, monostable	N/A	N/A	N/A	N/A	N/A	Varies	N/A
Cradle Relay N-F104 to F107	Axicom		•		•	•	•	•	•	•	up to 5A	220VDC/ 250VAC	N/A	A: 4, 6 B: 2	N/A	170 to 1700mW	5 to 60VDC	neutral, monostable	N/A	N/A	N/A	N/A	N/A	Varies	N/A
Cradle Relay P/W	Axicom		•		•	•	•	•	•	•	up to 5A	220VDC/ 250VAC	N/A	A: 4, 6 B: 2	N/A	1150 to 1700mW	5 to 60VDC/ 220VAC	polarized, monostable, bistable	N/A	N/A	N/A	N/A	N/A	Varies	N/A
Cradle Relay S	Axicom		•		•	•	•	•	•	•	up to 5A	220VDC/ 250VAC	N/A	A: 4, 6 B: 2	N/A	170 to 1700mW	5 to 60VDC	neutral, monostable	N/A	N/A	N/A	N/A	N/A	Varies	N/A
HIGH FREQUENCY RELAYS																									
HF3 Relay	Axicom		•		•	•	•	•	•		2A	220VDC/ 250VAC	1 form C, 1 CO	1	60W/62.5VA	70mW to 200mW	3 to 24VDC	monostable 1 coil, bistable 1 coil, 2 coil	PCB	SMT	80dB/ 72dB/ 45dB	0.03dB/ 0.12dB/ 0.35dB	N/A	Ag, Au covered	UL
HF3 S Relay	Axicom		•		•	•	•	•	•		2A	220VDC/ 250VAC	1 form C, 1 CO	1	60W/62.5VA	70mW to 200mW	3 to 24VDC	monostable 1 coil, bistable 1 coil, 2 coil	PCB	SMT	95dB/ 80dB/ 55dB	0.03dB/ 0.12dB/ 0.30dB	N/A	Ag, Au covered	UL
HF6 Relay	Axicom	FIN 100			•	•	•	•	•		2A	220VDC/ 250VAC	1 form C, 1 CO	1	60W/62.5VA	70mW to 200mW	3 to 24VDC	monostable 1 coil, bistable 1 coil, 2 coil	PCB	SMT	80dB/ 60dB/ 30dB	0.05dB/ 0.15dB/ 0.80dB	N/A	Ag, Au covered	UL

PRODUCT CATEGORY	Brand	INDUSTRIES									Contact Current Rating (A)	Contact Voltage Rating	Contact Arrangement	Contact Number of Poles	Contact Switching Power (W/VA)	Coil Power Rating (DC coil / bistable 1 coil/2 coils) (DC) (mW)	Coil Voltage Rating	Coil Magnetic System	Mounting Type	Terminal Type	Isolation (HF Parameter)	Insertion Loss (HF Parameter)	Insulation Initial Resistance (MΩ)	Contact Material	Key Agency Approvals
		1 AD&M	2 Appliances	3 Automotive	4 Communications	5 Energy	6 Industrial	7 Intelligent Building	8 Medical	9 Rail															
TIME DELAY RELAYS																									
DISCRETE PLUG-IN AND TIMING MODULES																									
VTM-1 Specification Grade Timing Module	Agastat										1A	24-240VAC/VDC	1 form A (SPST-NO)	1	N/A	3W	24-240VAC/VDC	NA	Screw mount	Quick connect terminals	N/A	N/A	N/A	Varies	RU, CSA
VTM1 On-Delay Timing Module	Agastat										1A	Nominal Voltage	Solid state 1 form A (SPST-NO)	1	N/A	3W	12, 24, 120 VAC	NA	Panel mount	Quick connect terminals	N/A	N/A	N/A	Varies	RU, CSA
VTM2 Off-Delay Timing Module	Agastat										1A	Nominal Voltage	Solid state 1 form A (SPST-NO)	1	N/A	4W	12, 24, 120VAC/VDC	NA	Panel mount	Quick connect terminals	N/A	N/A	N/A	Varies	RU, CSA
VTM3 Interval Timing Module	Agastat										1A	Nominal Voltage	Solid state 1 form A (SPST-NO)	1	N/A	4W	12, 24, 120VAC/VDC	NA	Panel mount	Quick connect terminals	N/A	N/A	N/A	Varies	RU, CSA
VTM7 Repeat Cycle Timing Module	Agastat										1A	Nominal Voltage	Solid state 1 form A (SPST-NO)	1	N/A	4W	12, 24, 120VAC/VDC	NA	Panel mount	Quick connect terminals	N/A	N/A	N/A	Varies	RU, CSA
VTMA1 On-Delay Timing Module	Agastat										1A	Nominal Voltage	Solid state 1 form A (SPST-NO)	1	N/A	3W	12, 24, 120VAC/VDC	NA	Panel mount	Quick connect terminals	N/A	N/A	N/A	Varies	RU, CSA
VTMR1 On-Delay Timing Module with Relay	Agastat										8A	Nominal Voltage	1 form C (SPDT)	1	N/A	3W	120VAC/VDC	NA	Panel mount	Quick connect terminals	N/A	N/A	N/A	Varies	RU, CSA
SCB/SCC Specification Grade Precision Timing Relay	Agastat										10A	28VDC/120VAC	2 form C, DPDT	2	N/A	3W	12, 24VDC	NA	Plug In	Varies	N/A	N/A	N/A	Varies	SCB RU, SCC UL
SCE Specification Grade True Off-Delay Timing Relay	Agastat										10A	28VDC / 120VAC	1 Form C SPDT, 2 Form C DPDT	1, 2	N/A	750mW	24, 48, 120VAC	NA	Plug In	Varies	N/A	N/A	N/A	Varies	RU
SRC Specification Grade Repeat Cycle Timing Relay	Agastat										10A	28VDC/120VAC	2 form C (DPDT)	2	N/A	3W	240VAC/120VDC	NA	Plug In	Varies	N/A	N/A	N/A	Varies	CE
SSC Specification Grade Timing Relay	Agastat										10A	28VDC/120VAC	2 form C (DPDT)	2	N/A	3W	240VAC/120VDC	NA	Plug In	Varies	N/A	N/A	N/A	Varies	CSA
SSF Series Universal Time Delay Relay	Agastat										10A	28VDC/120VAC	2 form C (DPDT)	2	N/A	2W	240VAC/120VDC	NA	Plug In	Varies	N/A	N/A	N/A	Varies	RU, CSA
SST Series Universal Time Delay Relay	Agastat										10A	120VAC	2 form C (DPDT)	2	N/A	3W	240VAC/120VDC	NA	Plug In	Varies	N/A	N/A	N/A	Varies	RU, CSA
STA Series Specification Grade Tab-Type Precision Relay	Agastat										10A	28VDC/120VAC	2 form C (DPDT)	2	N/A	3W	120VAC/125VDC	NA	Plug In	Varies	N/A	N/A	N/A	Varies	RU, CSA, CE
ELECTROPNEUMATIC TIMERS																									
2100 Series Relay	Agastat										1A/10A	110VDC/120VAC	2 form C, DPDT (adjustable delay)	2	N/A	6W	12 to 125VDC/115, 120 or 240VAC	AC, DC	Chassis mount	Octal plug or solder hook	N/A	N/A	N/A	Varies	CE
7000 Series Industrial Relay	Agastat										1A/20A	110VDC/120VAC	2 form C, DPDT or 4 form C, 4PDT	2, 4	N/A	8W	Various	AC, DC	Panel Mount	Varies	N/A	N/A	N/A	Varies	UL Listed
E7000 Series Nuclear Qualified Relay	Agastat										1A/20A	110VDC/120VAC	2 form C, DPDT or 4 form C, 4PDT	2, 4	N/A	8W	Various	AC, DC	Panel Mount	Screw terminals	N/A	N/A	N/A	Varies	UL Listed

te.com

TE Connectivity, TE Connectivity (logo) and Every Connection Counts are trademarks. All other logos, products and/or company names referred to herein might be trademarks of their respective owners.

The information given herein, including drawings, illustrations and schematics which are intended for illustration purposes only, is believed to be reliable. However, TE Connectivity makes no warranties as to its accuracy or completeness and disclaims any liability in connection with its use. TE Connectivity's obligations shall only be as set forth in TE Connectivity's Standard Terms and Conditions of Sale for this product and in no case will TE Connectivity be liable for any incidental, indirect or consequential damages arising out of the sale, resale, use or misuse of the product. Users of TE Connectivity products should make their own evaluation to determine the suitability of each such product for the specific application.

© 2017 TE Connectivity Ltd. family of companies All Rights Reserved.

04/17 Original