



ELEVATORS AND ESCALATORS

INNOVATIVE SOLUTIONS

Electromechanical and electronic products to keep people moving

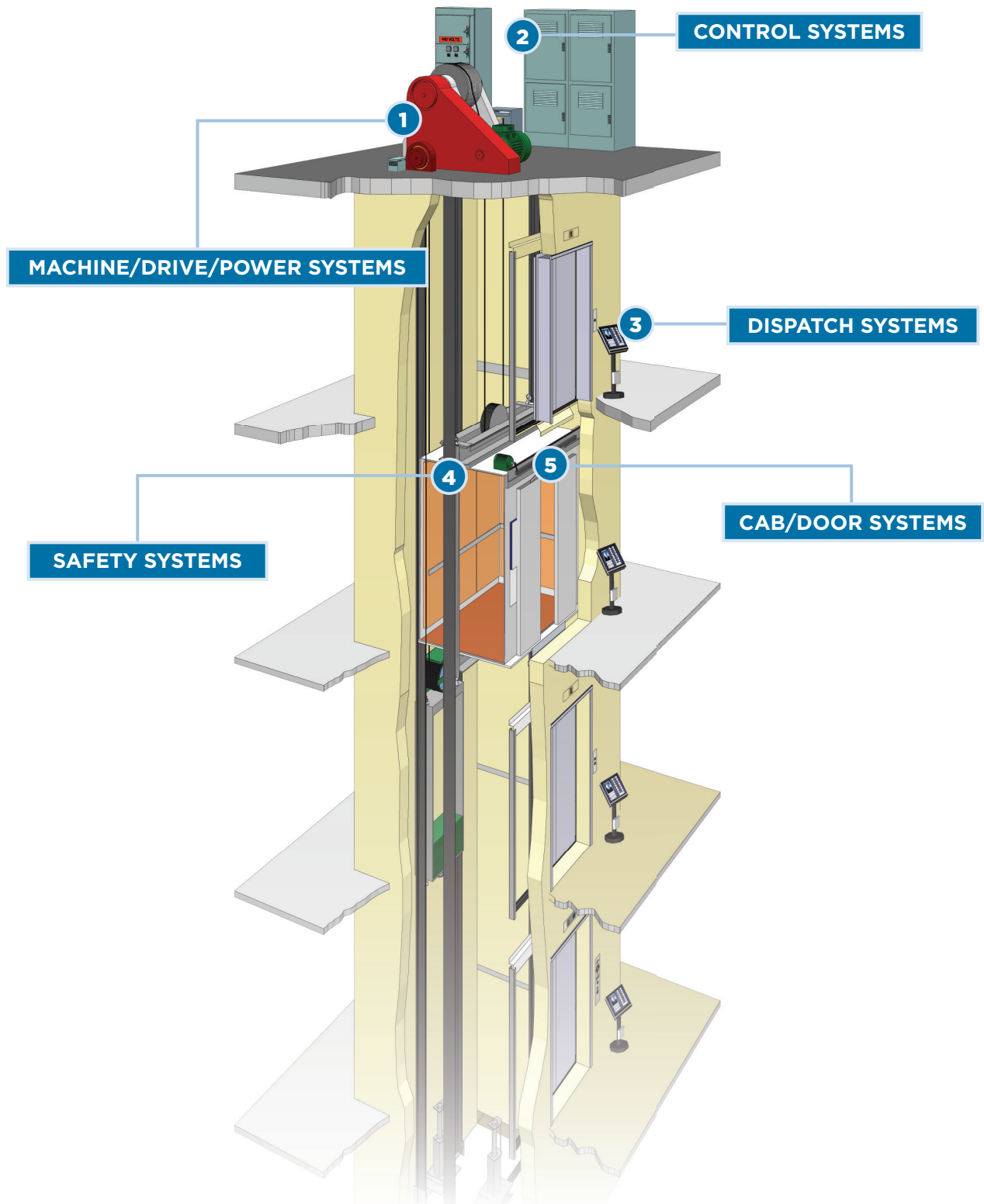
DESIGN NAVIGATOR

	ELEVATOR	ESCALATOR	MACHINE/ DRIVE/ POWER SYSTEMS (1)	CONTROL SYSTEMS (2)	DISPATCH SYSTEMS (3)	SAFETY SYSTEMS (4)	CAB / DOOR SYSTEMS (5)	Max Current Rating (A) ¹	Max Voltage Rating (V) ¹	Operating Temperature Range (°C)	Wire Range (AWG)	High Vibration Performance	SMT Compatible	Standards
Subsystems														
AMP-LATCH Ribbon Cable Connectors	*	*		*			*	1	250 AC	-65 to +105	28			UL
Antennas²	*				*								*	
Cable Identification for harnesses, wire and cable (CSL, SP, KMT, SBP, PVF)	*	*	*	*	*	*	*			-30 to +150				UL
Circuit Protection	*	*		*		*		15	240 AC	-40 to +85		*	*	UL, CSA, TUV
CLOUDSPLITTER Connector System	*	*		*	*		*	1.5 signal 5.0 power	150 AC 20 DC	-40 to +85	26-24		*	UL, cUL
Controlling Signal Relays	*	*		*				5	250 AC/220 DC	-55 to +125			*	UL, CSA, VDE, IEC
Custom Cable Assemblies	*	*	*	*	*	*	*	varies*	varies*	varies*		*		UL, CSA, VDE
DIP Switches	*	*	*	*				0.1	50 DC	-30 to +85			*	
Dynamic Series Connectors	*	*	*	*			*	65	630 AC	-55 to +105	30-6	*	*	UL, RU, CSA, TUV
ELECTRO-TAP Connectors	*	*					*		300 AC/DC	+105 Max	20-14			UL
Eurostyle Terminal Blocks	*	*	*	*				10	300 AC/DC	-30 to +105	30-12	*		UL, cUL
Industrial Ethernet	*	*		*	*		*	0.5	24 AC	-40 to +70	26-22	*	*	UL, CSA
Industrial USB	*	*		*	*			2	30 AC	-40 to +85	24-18	*	*	UL, CSA, USB 2.0
Flexible Printed Circuit (FPC)/ Flexible Flex Circuit	*		*	*			*	1.0	250 AC	-40 to +85		*	*	
Free Height Board-to-Board Connectors	*	*	*					0.5	100 AC	-40Cto +85			*	
Hermaphroditic Connectors	*	*					*	6	125 AC/DC	-30 to +105	22-18		*	UL
Heavy Duty Connectors (HDC)	*	*	*					350	3000 AC	-40 to +125	26-300 MCM	*	*	UL, IEC
LUMAWISE LED Holders	*	*					*	5	300 DC	-40 to +105	22-18			UL, IEC, Zhaga
MAG-MATE Terminals	*	*	*						240 AC	- 65 to + 125	34-12			UL
Micro/Standard Poke-In Connectors	*	*					*	5	250 AC/DC	-25 to +130	26-18	*	*	UL
Mini Universal MATE-N-LOK Connectors	*	*	*	*			*	9.5	600 AC	-55 to +105	30-16			UL, CSA, VDE
Modular Jacks	*	*	*	*	*		*	1.5	150AC	-40 to +85	26-22			UL
Mass Termination Assembly (MTA) & SL Connectors	*	*	*	*				12.5	600 AC	-55 to +105	26-18			UL, CSA
MULTILOCK Connectors	*	*	*	*				10	12 DC	-30 to +105	20-16	*		
NECTOR Power Systems	*	*				*	*	20	400 AC	-20 to +85	18, 4.0-1.5	*	*	UL, IEC
Releasable Poke-In Wire Connectors	*	*					*	6	400 AC/DC	-30 to +105	22-18	*	*	UL, IEC
Resistors³	*	*	*	*				Refer to table below for product details						
Power Relays & Contactors	*	*	*	*				120	600 AC	-55 to + 65				UL, CSA, VDE, SEMKO, IEC
Safety (Force Guided) Relays	*	*	*	*	*			16	250 AC	-40 to +85				UL, VDE, TUV, CQC, Ind
Single Phase EMI/RFI Power Filters	*	*	*	*	*			60	250 AC	-10 to +40	26-8			UL, CSA, VDE
Tactile Switches	*	*	*	*	*	*	*	0.05	24 DC	-35 to +105			*	
Three Phase EMI/RFI Power Filters	*	*	*	*	*			200	480 AC/277 AC	-10 to +40	12-0			UL, CSA, VDE
Universal MATE-N-LOK Connectors	*	*	*	*			*	19	600 AC	-55 to +125	30-16	*		UL, CSA, VDE

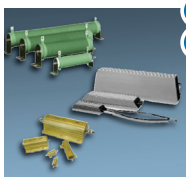
Resistors ³								
Family	Technology	Key Features	Control Circuitry	Capacitor Precharge / Discharge	Braking	Balancing	Snubber	Current Sense
C / ER	Wirewound	2.5 to 14W, C=Vitreous / ER=Silicone	*	*		*		
CBT/CCR	Carbon / Ceramic	1/4 to 2W Pulse Withstand	*					
CJT	Wirewound	175 to 1000W Mineral Filled			*			
HS / THS	Wirewound	5W to 300W Aluminium Housed	*	*	*			
Load Bank	Wirewound	Customized Load Bank			*			
RGP	Thick Film	0.25W High Ohmic	*			*	*	
RL73	Thick Film	SMD Current Sense	*					*
RN73 / RP73 / CPF	Thin Film	SMD Precision Chip	*				*	
RR / ROX	Metal Film/Oxide	1 to 7W High Power	*	*		*	*	
SBC	Wirewound	4 to 40W Ceramic Cased	*	*				
SL / SBL	Foil	0.25W to 2.5W Current Sense	*					*
SM	Wirewound/Oxide	1 to 5W Moulded Power Chip	*	*				*
SQ	Wirewound/Oxide	2 to 40W Ceramic Cased	*	*	*			
TLR / HL	Foil	0.5 to 3W Current Sense	*				*	*
TE	Wirewound	10 to 2500W Tubular		*				

- CQC - China Quality Certification
- CSA - Canadian Standard Association
- cUL - Tested to Canadian Standards by Underwriters' Laboratories
- IEC - International Electrotechnical Commission
- Ind - Meets product specific industry standards (details on product page at te.com)
- RU - Recognized Under
- SEMKO - Svenska Elektriska Materielkontrollanstalten
- TUV - Technischer Überwachungs-Verein
- UL - Underwriters' Laboratories
- VDE - Verband Deutscher Elektroingenieure
- Zhaga - Standard for Interchangeable LED Light Sources

TE OFFERS SOLUTIONS FOR ALL YOUR ELEVATOR NEEDS.



FEATURED PRODUCTS



1 Resistors

2

- Accomodate a wide variety of applications with a large product offering
- Improve the life of other system components with electrical discharge control
- Allow for fine tuning of motor performance to support unique installation requirements

[Website](#)
[Catalog](#)



1

2

5

Dynamic Series Connectors

- Support low signal to high power applications with a broad range of versatile contacts
- Save time and money with centralized modular wiring system
- Prevent mismatching with keyed and color coded housings

[Website](#)
[Catalog](#)



2

Free Height Board-to-Board Connectors

- Support high reliability with polarized mating
- Provide design flexibility with a variety of stack heights
- Save valuable PCB space with compact connector design

[Website](#)
[Catalog](#)

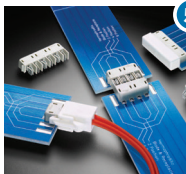


5

LUMAWISE LED Holders

- Simplify installation with snap-in LED retention feature
- Avoid soldering with poke-in wire connection
- Streamline assembly and installation with tool-less termination of solid fused and stranded wire

[Website](#)
[Brochure](#)



5

Hermaphroditic Connectors

- Save space with low profile, flat surface design
- Provide manufacturing flexibility with SMT or reflow processing compatibility
- Simplify design by allowing the same footprint on both ends of the strip

[Website](#)
[Catalog](#)



1

2

Mass Termination Assemblies (MTA) & SL Connectors

- Reduce assembly costs with mass termination of wire
- Allow for daisy chain applications with wire feed-through capability
- Increase design flexibility with right-angle and vertical mount products and through-hole and SMC configurations

[Website](#)
[Selection Guide](#)



4

5

NECTOR Power Systems

- Reduce assembly time with power “plug and play”
- Minimize space requirement with multi-position connectors in a circular form factor
- Meet outdoor sealing requirements with IP67 rated versions

[Website](#)
[Brochure I](#)
[Brochure II](#)



2

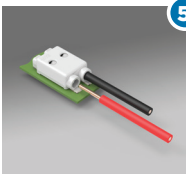
3

5

CLOUDSPLITTER Connector System

- Offer both Cat 5e signal performance and DC power in one RJ45 standard package
- Provide surface mount capability in a Cat 5e connector
- Achieve easy retrofit with acceptance of standard RJ45 plugs

[Website](#)
[Data Sheet](#)



5

Releasable Poke-In Wire Connector

- Minimize shadowing with rounded corners
- Save space with low profile design
- Allow for repeatable, flexible wire insertion

[Website](#)
[Brochure](#)



1

2

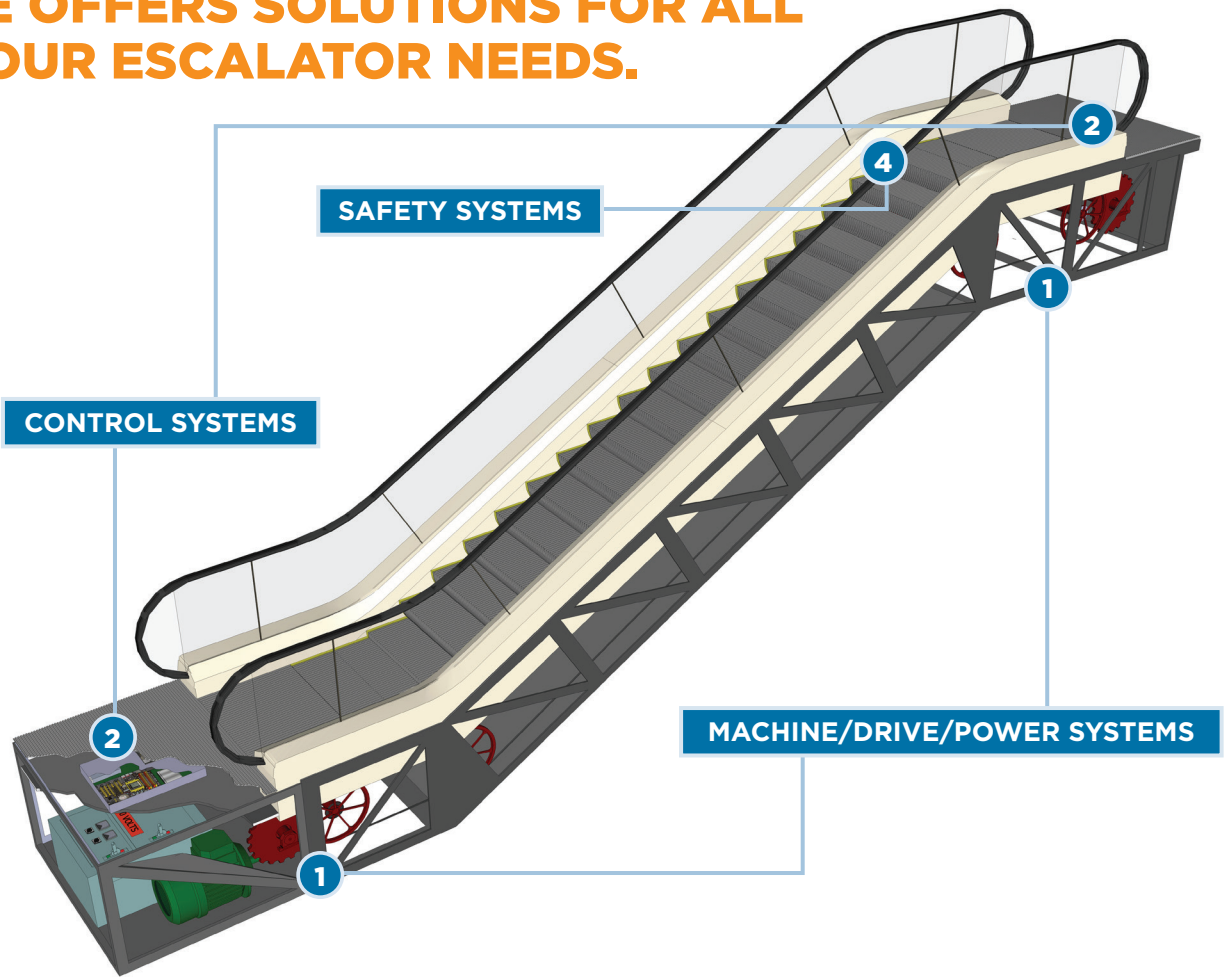
4

Relays

- Withstand extreme environments with high performance designs
- Design for delayed action with internal timer option
- Support system needs with various options from a single source

[Website](#)

TE OFFERS SOLUTIONS FOR ALL YOUR ESCALATOR NEEDS.



FEATURED PRODUCTS



2
4

Safety (Force Guided) Relays

- Prevent dangerous situations in critical applications with mechanically linked contacts
- Simplify circuit monitoring with one relay for both power and signal switching
- Meet safety requirements with IEC and EN compliant design

[Website](#)
[Catalog](#)



1
2

Eurostyle Terminal Blocks

- Easy assembly and expansion with modular design and interlocking features
- Support repeated connect/disconnect cycles with robust clamping technology
- Gain design flexibility with broad product offering

[Website](#)
[Quick Reference Guide](#)



1
2

Three Phase EMI/RFI Power Filters

- Enable a broad range of applications with a large product offering
- Prevent interference with electronic systems by reducing radiated electrical noise
- Comply with mandated EMI/RFI standards in an easy to install package

[Website](#)
[Catalog](#)



1
2
5

Universal MATE-N-LOK Connectors

- Achieve design flexibility and polarization with interchangeable contacts
- Improve reliability in high moisture environments with splash proof options
- Maintain ultimate safety with egg crated finger-proof design

[Website](#)
[Catalog](#)

LET'S CONNECT

Our development capabilities range from simple modifications to unique custom designed solutions. With our customer focused product development, engineering support and easy access to additional online information, TE can help you take your elevator and escalator project to the next level.

Technical Support

te.com/support-center

Australia	+86 400-820-6015	Hungary	+36 1-2892040	Portugal	+34 91-6630420
Austria	+43 1-9056-0	India	+86 400-820-6015	Russia	+74 95-790-790-2200
Belgium	+31 73-6246999	Ireland	+1 800-882-391	Slovakia	+42 02-720-11102
Brazil	+55 11-2103-6000	Italy	+39 011-4012111	Slovenia	+38 615-602-132
China	+86 400-820-6015	Japan	+044-844-8052	South Africa	+97 150-457-0806
Czech Republic	+42 02-7201-1103	Korea	+02-3415-4607	Spain	+34 932-910-330
Denmark	+46 8-5072-5000	Latvia	+37 2-6778-673	Sweden	+46 8-5072-5000
Estonia	+37 2677-8673	Lithuania	+37 037426900	Switzerland	+41 71-447-0447
Finland	+46 8-5072-5000	Luxembourg	+31 73-6246999	Taiwan	+86 400-820-6015
France	+33 1-34-20-8686	Netherlands	+31 73-6246999	Turkey	+90 212-282-6053
Germany	+49 6151-607-1999	New Zealand	+86 400-820-6015	United Kingdom	+44 0800-267666
Greece	+97 1-4-347-0226	Norway	+46 8-5072-5000	United States of America	800-522-6752
Holland	+31 73-6246999	Poland	+48 22-4576750		

te.com

© 2014 TE Connectivity Ltd. family of companies. All Rights Reserved.

1-1773838-8 CIS CM 08/2014

2Pro, AMP, AMPMODU, CLOUDSPLITTER, FASTON, MATE-N-LOK, Micro-MaTch, PolySwitch, TE Connectivity and TE connectivity (logo) are trademarks. HDMI is a trademark of HDMI Licensing LLC ZigBee is a trademark of the ZigBee Alliance. Other logos, product and Company names mentioned herein may be trademarks of their respective owners.

While TE has made every reasonable effort to ensure the accuracy of the information in this brochure, TE does not guarantee that it is error-free, nor does TE make any other representation, warranty or guarantee that the information is accurate, correct, reliable or current. TE reserves the right to make any adjustments to the information contained herein at any time without notice. TE expressly disclaims all implied warranties regarding the information contained herein, including, but not limited to, any implied warranties of merchantability or fitness for a particular purpose. The dimensions in this brochure are for reference purposes only and are subject to change without notice. Specifications are subject to change without notice. Consult TE for the latest dimensions and design specifications.